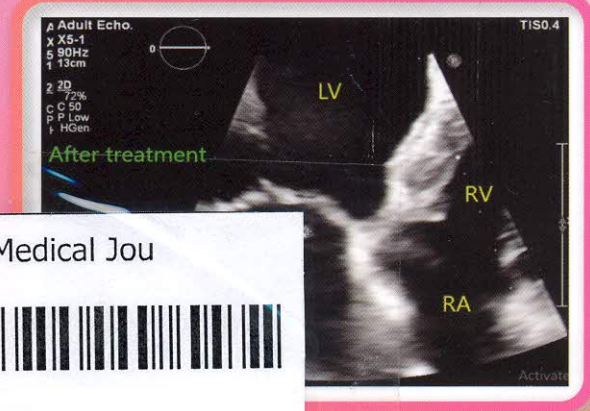
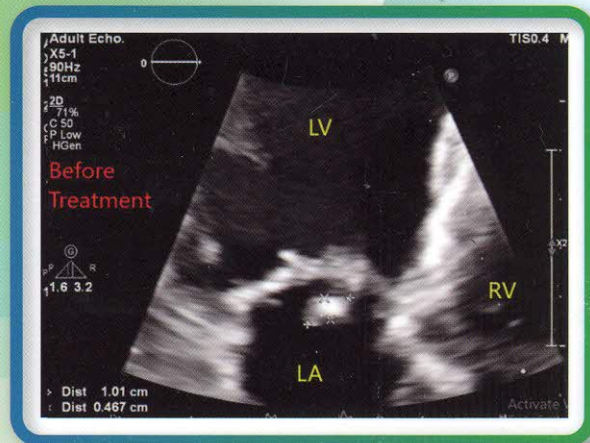


## Highlights

- A Retrospective Review of Real-life Practice of Intravenous Immunoglobulin Usage in Autoimmune Neurological Disease
- Urine TB LAM as a Tool for Helping Diagnosis and Follow Up of Treatment Response of Pulmonary Tuberculosis
- Minimally Invasive Screw Cement Augmentation in Pedicle Technique (MIS CAPT) for Spine Fixation in Osteoporosis Fragility Fracture and Non-Fracture Patient: Surgical Technique, Indication and 1-year Outcome Evaluation.
- Sonography and MRI Appearance of Proximal Long Head Biceps Tendon

## *Gemella haemolysans* Native Valve Endocarditis



The Bangkok Medical Jou

SERIALS



007264

bib:13399127299

Transthoracic echocardiogram in apical 4 chambers view showed vegetation attached to anterior leaflet of mitral valve at the time of diagnosis (before treatment), and residual vegetation with reduction in size from to 1.01cm to 0.565cm at 4 weeks after completion of treatment (after treatment).

Detailed description is given on pages 124-127



### Editorial

- E The Bangkok Medical Journal's Editor

### Original Articles

- 62 **A Retrospective Review of Real-life Practice of Intravenous Immunoglobulin Usage in Autoimmune Neurological Disease**  
*Kulkantrakorn K, Kanjanavithayakul P*
- 74 **The Influence of Knowledge Management, Safety Climate, and Information Technology Capabilities on a Smart Emergency Logistics System: A Study of BDMS Emergency Services**  
*Patchetphokin K, Meechaisue P, Chinundej N, Chaimongkol D*
- 85 **A Retrospective Study of Prescribing Error Associated with The Computerized Prescribing System and The Handwritten Prescribing System Among Prescriptions in a Private Hospital, Chiang Mai Province**  
*Prakob J, Maturapanee P, Pianmongkon W, Nenpang M*
- 92 **Urine TB LAM as a Tool for Helping Diagnosis and Follow Up of Treatment Response of Pulmonary Tuberculosis**  
*Saenghirunvattana S, Sricharoenchai T, Sricharoenchai S*
- 95 **Minimally Invasive Screw Cement Augmentation in Pedicle Technique (MIS CAPT) for Spine Fixation in Osteoporosis Fragility Fracture and Non-Fracture Patient: Surgical Technique, Indication and 1-year Outcome Evaluation.**  
*Buranakarl T, Nimmankiatkul S, Pornsopanakorn P, Jaisanuk K*
- 104 **A Retrospective Comparison of Hypothermia Proportion Among Newborns Using General Postnatal Nursing Practice versus Baby Warm Practice Guideline**  
*Yawichai C, Morpa M, Teetuan M*
- 111 **Measuring Health Literacy Among People Living with HIV in a Medical University Hospital: A Cross-Sectional Study**  
*Bunman S, Wannapaschaiyong P, Dumavibhat N, Virojskulchai T, Nomsiri A, Malarat A, Saiyasalee S*
- 116 **Evaluation of health literacy among men who have sex with men with living HIV**  
*Bunman S, Wannapaschaiyong P, Dumavibhat N, Virojskulchai T, Nomsiri A, Malarat A, Saiyasalee S*

### Case Report

- 121 **Janus kinase 1/2 inhibition with Baricitinib for treatment of anti-signal recognition particle necrotizing autoimmune myositis: a case report**  
*Phadungvorasart W, Kulkantrakorn K*
- 124 **Gemella haemolysans Native Valve Endocarditis**  
*Ongkittikul S, Kanjanatarayont S*

---

---

**Review Article**

- 128 **Sonography and MRI Appearance of Proximal Long Head Biceps Tendon**  
*Saksirinukul T*

**Special Article**

- 134 **Barriers to the Uptake of Cataract Surgery in Lumbini Nepal and Aranyaprathet Thailand**  
*Simaroj P, Phol R, Chalalai S, Phol R*