

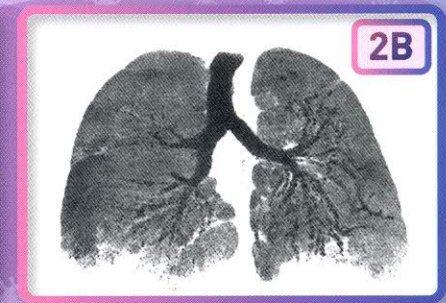
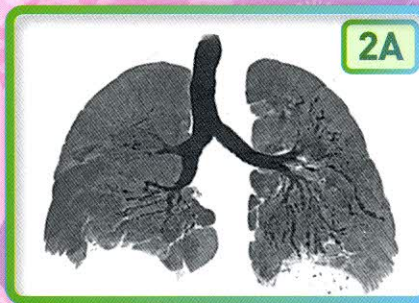
**Highlights**

- Predicting Factors of Spiritual Well-Being among Thai Patients with Non-communicable Diseases
- Agreement of BDMS Utilization Review Technology Version 2 (BURT 2) in Comparison with Utilization Management (UM) Physicians' Opinions to Assess Appropriateness of Continuation of Hospital Stay
- A Survey of Stress and Impacts in Registered Nurses During the COVID -19 Pandemic
- CNS Tumor with *BCOR* Internal Tandem Duplication: The First Case in Southeast Asia

### Management of Pulmonary Fibrosis from COVID-19 Pneumonia with Nintedanib



Coronal CT views of a COVID-19 patient taken at 10-month interval, showing a multifocal thin band-like peribronchial opacity in both lungs with mild traction bronchiectasis at the initial [1C] and at the follow-up [1D] with much decreased thin band-like peribronchial opacity, but increased in degree of traction bronchiectasis diffusely.



The minimum intensity projection [MinIP] images show interval increased degree of diffuse traction bronchiectasis in the 10-month interval on the initial [2A] and follow-up [2B] studies.

Detailed description is given on pages 102-105



Editorial

- E The Bangkok Medical Journal's Editor

Original Articles

- 69 **The Effect of Prevent-U Application on Hypertension Prevention among Elderly with Risk of Hypertension in Phrae Province, Thailand: A Quasi-Experimental Design**  
*Jumneansuk A, Plalungrit S, Dangkrajang S, Tongyoo A, Dechboon P*
- 76 **Predicting Factors of Spiritual Well-Being among Thai Patients with Non-communicable Diseases**  
*Chaiyasit Y, Chanbunlawat K, Soboon S, Wongarsa P, Piboonrungrroj P*
- 83 **The Prevalence and Characteristic of Patients Achieve Target Doses of Medications Used to Treat Heart Failure with Reduced Ejection Fraction at Heart Failure Clinic**  
*Hemapainpairoa J, Khongmee T, Priksri W, Intarachumnum S, Hongsumrite C, Prompaison S, Thammason S, Sapapsap B*
- 88 **Agreement of BDMS Utilization Review Technology Version 2 (BURT 2) in Comparison with Utilization Management (UM) Physicians' Opinions to Assess Appropriateness of Continuation of Hospital Stay**  
*Banomyong P, Phengpinit N, Iamsamang S, Phetchunsakul K, Panyasorn J*
- 102 **Management of Pulmonary Fibrosis from COVID-19 Pneumonia with Nintedanib**  
*Saenghirunvattana S, Saksirinukul T, Sricharoenchai T*

Case Report

- 106 **A Survey of Stress and Impacts in Registered Nurses During the COVID -19 Pandemic**  
*Gaesawahong R, Piaseu N, Warapapong O, Yongprawat T, Dawudom N*
- 113 **Neurological Presentations and CNS Pathology of Rosai-Dorfman disease: A 28-Year Report and Review from Single Tertiary Referral Institute in Thailand**  
*Thammachantha S, Polpong P, Veerasan K, Kiathiranon N, Wattanasen Y, Keandoungchun P, Masaya-anon P*
- 121 **CNS Tumor with BCOR Internal Tandem Duplication: The First Case in Southeast Asia**  
*Fangsaad T, Jansutjawan S, Kittikakul P, Assawabumrungrkul S, Phalakornkul N, Jinawath A, Teerapakpinyo C, Chaichana T, Shuangshoti S, Santisukwongchote S*

Review Article

- 126 **Integrative Review for a Family-centered Care Intervention to Promote Family Functioning in Families Living with Children with Chronic Illness**  
*Punaglom N, Tungpaibool P, Sansuriwong P, Kaewkerd O, Boobpamala S*
- 136 **Executive Functions in Children with ADHD**  
*Wannapaschaiyong P, Kiewkong S, Bunman S*
- 141 **Impacts of Perinatal Death on Women and Families: A Qualitative Systematic Review**  
*Punaglom N, Arayasinlathon N*