

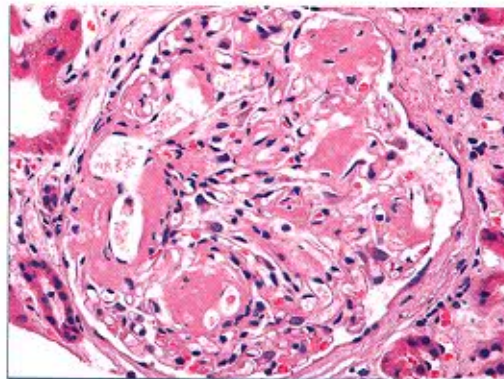
THE BANGKOK MEDICAL JOURNAL

February 2016, Volume 11

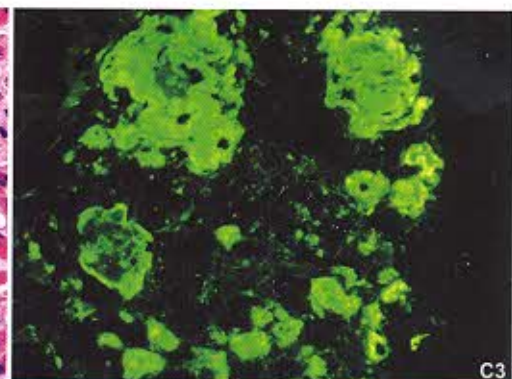
Highlights

- Diagnosing Obstructive Sleep Apnea by Performing Fiberoptic Bronchoscopy and PEEP Titration of Mask Continuous Positive Airway Pressure
- Evaluation of Liver and Kidney Toxicity in Rats Receiving Proteoglycans from Fish Cartilage for the Acceleration of Burn Wound Healing
- EUS-Guided Rendezvous Pancreatic Duct Stenting in Symptomatic Chronic Pancreatitis Patient
- Outpatient Total Joint Arthroplasty-Can It Be Done Safely?: A Review
- Erectile Dysfunction

AA AMYLOIDOSIS IN SYSTEMIC LUPUS ERYTHEMATOSUS



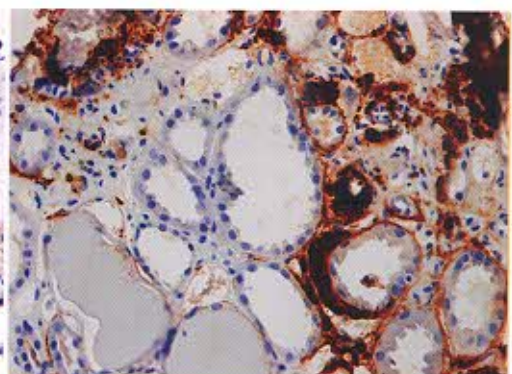
Glomerular deposits of eosinophilic delicately fibrillar material (H&E x 200).



Glomerular deposits of C3 (IF x 200).



Glomerular deposits of amyloid A (IHC x 200).



Peritubular and interstitial deposits of amyloid A (IHC x 200).

The Bangkok Medical Journal
SERIALS



005103
bib:13399127299

Detailed description is given on pages 82-84



Editorial

- E The Bangkok Medical Journal's Editor

Original Article

- 1 **Diagnosing Obstructive Sleep Apnea by Performing Fiberoptic Bronchoscopy and PEEP Titration of Mask Continuous Positive Airway Pressure**
Saenghirunvattana P, Saenghirunvattana C, Napairee C, Pupipat P, Christina Gonzales M, Suthisri K, Siangpro C
- 6 **Innovative Intracapsular Tonsillectomy: How we do it.**
Kiatsurayanon S, Thiithapana P
- 11 **Evaluation of Liver and Kidney Toxicity in Rats Receiving Proteoglycans from Fish Cartilage for the Acceleration of Burn Wound Healing**
Bunman S, Dumavibhat N, Larbcharoensub N
- 17 **Perceived Social Isolation, Self-Care Behaviors and Health Status among Community Dwelling Older Adults Living Alone**
Phatharapreeyakul L, Kraithaworn P, Piaseu N
- 24 **Effect of Participation in Type 2 Diabetes Mellitus (T2DM) Education Pathway on HbA1c**
Songsai P, Tungjuk N, Phitchayapiyasak K, Tantinukul Y

Case Report

- 28 **MRI Findings in Transient Global Amnesia**
Chansakul C
- 32 **Reversible Stress-induced Cardiomyopathy (Takotsubo) Mimics Acute Anterior Wall ST Segment Elevation Myocardial Infarction: A Case Report with Review of Literature**
Veerakul G, Kiattipoom B, Tawatchai N, Issaraporn C, Supatcha W, Natharinee S, Amornrat S, Krongthong P, Watchira S, Nattawut P, Palakorn S
- 39 **Liver Abscess caused by *Klebsiella pneumoniae*: A Case Report**
Jongwutives U, Suchato C
- 42 **EUS-Guided Rendezvous Pancreatic Duct Stenting in Symptomatic Chronic Pancreatitis Patient**
Siripun A
- 47 **Practical Points in Diagnosis of Acute Appendicitis by CT Image and/or Pelvic Ultrasonic Scan: A Case Report**
Suchato C

Review Article

- 52 **Outpatient Total Joint Arthroplasty-Can It Be Done Safely?: A Review**
Hongvilai S, Narkbunnam R, S. Mow C
- 57 **Erectile Dysfunction**
Leungwattanakij S
- 73 **Part 1: Balloon and principle of Balloon Angioplasty in Peripheral Arterial Disease (PAD)**
Tanisaro K

Medical Images

- 79 **Demonstration of Ingested Fish Bone Embedding at Upper Esophagus by CT 3D Reconstruction**
Pattamakajonpong P, Supharezokthaveechai R, Wongwarntana A
- 81 **Valentine's Day**
Mongkolpanya C

Special Feature

- 82 **AA Amyloidosis in Systemic Lupus Erythematosus: Case Presentation Interhospital Renal Clinicopathological Conference (1/2016)**
Boonpucknavig V, Worawichwong S, Jarukitsopa S, Sangsiraprapha W
- 85 **Live-Attenuated Tetravalent Dengue Vaccine Development at Mahidol University**
Yoksan S
- 86 **In Memoriam - Professor Natth Bhamarapravati (1928-2004)**
Yoksan S

Book Review

- 87 **Book Review: Handbook of Targeted Cancer Therapy**
Kluwer W