

# THE BANGKOK MEDICAL JOURNAL

September 2015, Volume 10

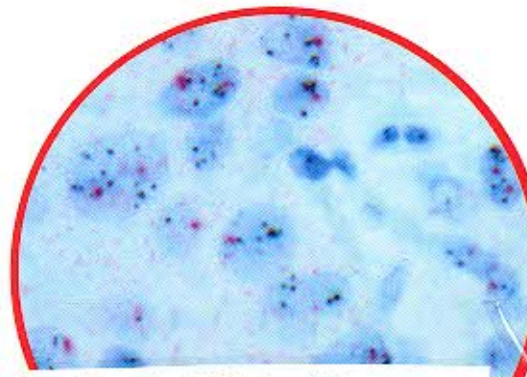
## Highlights

- Coronary Slow Flow Phenomenon: A Case Report
- Interhospital Transport of the ECMO Patients in Bangkok Hospital
- A Rare Case of Single, Isolated Liver Metastases from Spermatic Cord Leiomyosarcoma
- Optimal Treatment in Parkinson's disease: Pharmacotherapy and Practical Tips
- Paget's Disease of the Nipple: Choice of Imaging Modalities for Breast Localization in Case of Multiple Breast Nodules and Sentinel Node
- Advances in Imaging: Brain Tumors to Alzheimer's Disease

## HER2 gene copy number

can be assessed with a conventional microscope.

In the picture, *HER2* gene amplification is clearly shown by **DISH assay**.



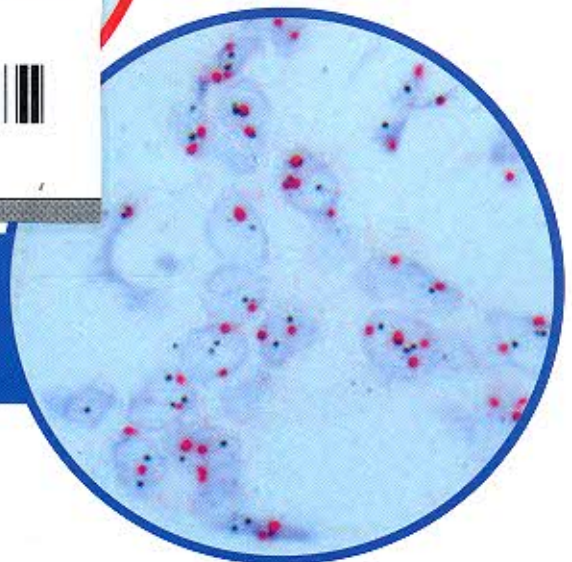
**HER2  
amplified**

The Bangkok Medical Jou  
SERIALS



004650  
bib:13399127299

**HER2  
non-amplified**



**Black signal** = human epidermal growth factor receptor 2 (*HER2*)

**Red signal** = chromosome 17 centromere (CEP17)

Detailed description is given on pages 1 - 5





Editorial

- E The Bangkok Medical Journal's Editor

Original Article

- 1 **Reproducibility in the Assessment of HER2 DISH in Breast Cancer**  
*Anekpuritanang T, Chaichana T, Ruangvejvorachai P, Shuangshoti S*
- 6 **CO<sub>2</sub> Laser Blepharoplasty for Vulnerable Elderly Patients with Severe Ptosis**  
*Thonglai S*
- 10 **Smoking, Hemoglobin A1c and Complications in People with Type 2 Diabetes Mellitus**  
*Saibuathong N, Neelapaichit N*
- 16 **Effect of Lifestyle Modification Program with Arm Swing Exercise on Health Behavior, Nutritional Status and Capillary Blood Sugar of Persons with pre-diabetes in the Community**  
*Phonyiam R, Terathongkum S, Thungsarn S, Vallipakorn S*

Case Report

- 22 **Coronary Slow Flow Phenomenon: A Case Report**  
*Veerakul G, Ounpothi M, Satheeranate N, Waramit J, Sangwan A, Sindhuwanna U, Kawkaew T, Khengrang A*
- 27 **A Case of Lung Carcinoid Tumor, Successfully Treated with Bronchoscopic Cryosurgery in Thailand**  
*Saenghirunvattana S, Napairee C, Suttinont P, Saenghirunvattana C, Gonzales MC, Sutthisri K, Siangpro C*
- 34 **Interhospital Transport of the ECMO Patients in Bangkok Hospital**  
*Akanitthapichat S, Sakiyalak P, Chirasanta K, Chairatthanawanit S, Gunyaphan S*
- 39 **Unrecognized Hemo-Pneumothorax from Major Chest Injury Leads to Fatal Condition: A Case Report**  
*Hanterdsith B*
- 42 **The Atrial Myxoma, the Learning Model for Cardiac Tumor Assessment Using Magnetic Resonance Imaging: A Case Report**  
*Chaothavee L, Boonme N, Veerakul G*
- 50 **A Rare Case of Single, Isolated Liver Metastases from Spermatic Cord Leiomyosarcoma**  
*Sumetchotimaytha W, Khuhaprema T, Limvipaveanan K, Varongchayakul C*
- 55 **Primary Renal Synovial Sarcoma**  
*Jitawatanarat P, Leungwattanakij S, Boonpucknavig V*



---

---

**Review Article**

- 59 **Optimal Treatment in Parkinson's Disease: Pharmacotherapy and Practical Tips**  
*Kulkantrakorn K*
- 65 **Female Sex Hormones and Epilepsy**  
*Chansakul C*

**Continue Medical Education (CME)**

- 72 **Paget's Disease of the Nipple: Choice of Imaging Modalities for Breast Localization in Case of Multiple Breast Nodules and Sentinel Node**  
*Suchato C, Vongsaisuwon M, Ratee K, Kimhamanon P*

**Medical Images**

- 78 **Acute Colicky Abdominal Pain Caused By Drug Abuse**  
*Amornrattanakosol J, Suchato C*

**Special Feature**

- 79 **Helicobacter Pylori Infection in Bhutan**  
*Vilaichone R, Ratanachuek T, Pittayanon R, Maneerattanaporn M, Pisespongsa P, Wiwattanachang O, Sansak I, Chaiyamahapark O, Jeamsripong W, Tshering L, Yamaoka Y, Mahachai V*
- 83 **Advances in Imaging: Brain Tumors to Alzheimer's Disease**  
*Patil R, Koronyo Y, Ljubimov AV, Salumbides B, Mamelak A, Gangalum PR, Ding H, Portilla-Arias J, Holler E, Butte P, Koronyo-Hamaoui M, Ljubimova JY, Black KL*

**Book Review**

- 98 **Book Review: Abeloff's Clinical Oncology, 5<sup>th</sup> Edition**  
*Suchato C*