



วารสารใหม่ประจำเดือน  
ตุลาคม...2557.....

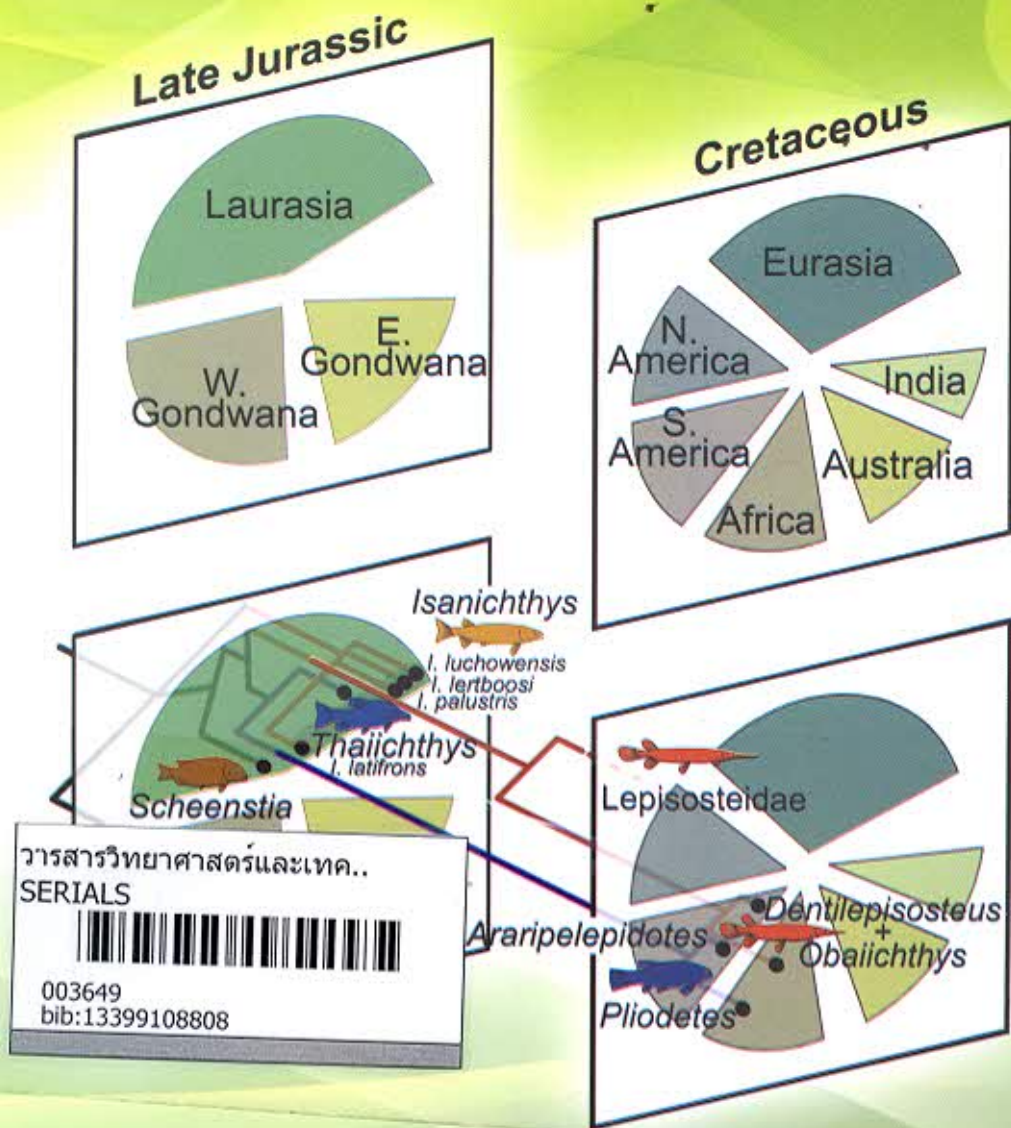
ปีที่ 33 ฉบับที่ 4 กรกฎาคม - สิงหาคม 2557

ISSN : 1686-9664

วารสาร

# วิทยาศาสตร์และเทคโนโลยี มหาวิทยาลัยมหาสารคาม

www.journal.msu.ac.th



## Content

Original	page
<b>New vertebrate-bearing localities in the Triassic of Thailand.....</b>	<b>335</b>
Chalida Laojumpon Uthumporn Deesri , Suchada Khamha, Athiwat Wattanapituksakul, Komsorn Lauprasert, Suravech Suteethorn, Varavudh Suteethorn	
<b>Preliminary note on a small ornithopod dinosaur from the Phu Kradung Formation (terminal Jurassic – basal Cretaceous) of Phu Noi, north-eastern Thailand.....</b>	<b>344</b>
Eric Buffetaut, Suravech Suteethorn, Varavudh Suteethorn, Uthumporn Deesri, Haiyan Tong	
<b>Ginglymodian fishes (Actinopterygii, Holostei) from Thailand: An overview .....</b>	<b>348</b>
Lionel Cavin, Uthumporn Deesri, Varavudh Suteethorn	
<b>First discovery of a juvenile <i>Thaichthys</i> (Actinopterygii: Holostei) from the Late Jurassic - Early Cretaceous of Thailand .....</b>	<b>357</b>
Uthumporn Deesri, Varavudh Suteethorn, Romain Liard, Lionel Cavin	
<b>Note on giraffe remains from the Miocene of continental Southeast Asia.....</b>	<b>365</b>
Yuichiro Nishioka, Rattanaphorn Hanta, Pratueng Jintasakul	
<b>Note about new Pleistocene faunal remains from Tham Prakai Phet, Chaiyaphum Province, Thailand .....</b>	<b>378</b>
Arnaud Filoux, Carole Lespes, Athiwat Wattanapituksakul, Cholawit Thongcharoenchaikit	
<b>A revision of <i>Testudo tungia</i> Yeh, 1963 from the Lower Pleistocene Gigantopithecus cave, Liucheng, Guangxi Province, China .....</b>	<b>386</b>
Wilailuck Naksri, Li Lu, Haiyan Tong	
<b>Devonian radiolarian faunas in Pai Area, Mae Hong Son Province, Northern Thailand: Paleogeographic implication .....</b>	<b>393</b>
Premvadee Sanjit, Nutthawut Wonganan, Yupa Thasod	
<b>A new locality of well-preserved silicified Early Permian brachiopods in Loei province, NE Thailand.....</b>	<b>403</b>
Sakchai Juanggam, Mongkol Udchachon	
<b>Development of an education guide for primary school students to be used in conjunction with a visit to dinosaur exhibition in Sirindhorn Museum .....</b>	<b>412</b>
Thanasiri Suteethorn	