

Elevate | Inspire | Innovate | Energize

# Nursing 2012<sup>®</sup>

THE PEER-REVIEWED JOURNAL OF CLINICAL EXCELLENCE

www.Nursing2012.com

วารสารใหม่ประจำเดือน  
กันยายน.....2555.....

## Breaking sterility<sup>22</sup>

**CE** KEEP EASY RIDERS SAFE ON ATVs 28

**CE** EPIDURAL ANALGESIA 36  
POSTPARTUM PSYCHOSIS 44

Nu rsing  
SERIALS



00 1857  
bib:13399108162

AUGUST • VOL. 42 NO. 8

บริษัท เมอร์คิวรี ดาต้า จำกัด  
 เลขที่ 59/70 หมู่ที่ 6 ถนนงามวงศ์วาน 1,290 bath  
 แขวงทุ่งสองห้อง เขตหลักสี่  
 กรุงเทพฯ 10210 โทร. 0-2591-6515,16

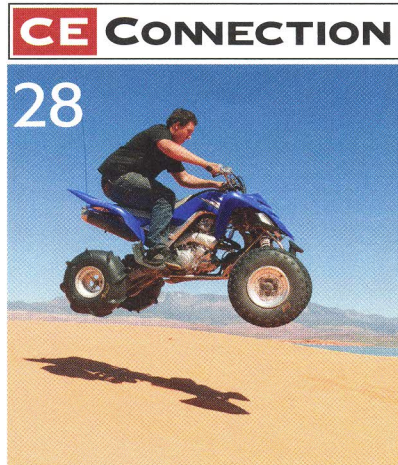
# Nursing2012<sup>®</sup>

## features

**Winner of 2012  
silver ASHPE awards for  
best peer-reviewed journal  
and best new department!**

### 28 Help easy riders stay safe on ATVs

By Deborah A. Hassler, MSN, ACNP-BC, and Mark F. Mendell, MSN, ANP-BC  
The unique hazards of all-terrain vehicles (ATVs) place crash victims at high risk for devastating injuries. Learn why ATVs can be dangerous, how to assess and care for patients involved in crashes, and what to teach those who ride ATVs to keep them safer in the future.



For immediate CE test processing, see our website at <http://www.nursingcenter.com/ce/nursing>.

### 22 Breaking sterility: Dealing with procedural violations in healthcare

By Lauren Simko, BSN, RN, FNP  
If you observe another healthcare professional breaking sterility, do you always speak up? This article offers practical advice for meeting your ethical obligation to intervene for patient safety.

### 35 SHARING Time for Mrs. M

By Brenda J. Glover, RN  
By deftly rearranging her schedule, a home healthcare nurse finds the key to providing the nursing care this patient needed.

### 43 PATIENT EDUCATION SERIES Peripheral arterial disease

After educating your patients about the dangers of PAD, offer them this handout to take home.

### 44 Beyond "baby blues": Recognizing postpartum psychosis

By Elana Rosinger, BSN, RN, CMSRN, and Donald D. Kautz, PhD, RN, CRRN-CNE  
Unrecognized and untreated, postpartum psychosis can have tragic consequences for newborns and their families. Here's how to assess patients at risk and help them get the treatment they need.



### 36 Epidural analgesia: What nurses need to know

By Mona Sawhney, PhD, RN, NP  
Refresh your knowledge of epidural analgesia and review current standards of care. This comprehensive overview covers safely administering epidural analgesia to manage certain types of acute and chronic pain, achieving optimal pain control, and identifying and managing adverse reactions or complications.

### 47 When do (or don't) you administer drugs to patients on hemodialysis?

By E. James Ryan, BSN, RN, CDN  
If a patient is scheduled for hemodialysis, should you hold antihypertensive medication beforehand? How about antibiotics? This article answers these and other common questions about drug administration for patients on hemodialysis.

### 50 Detecting and treating hypoglycemia in patients with diabetes

By Darnell Mompoint-Williams, DNP, ANP-BC; Penni I. Watts, MSN, RN; and Susan J. Appel, PhD, ACNP-BC, FNP-BC, CCRN, FAHA  
Prevent life-threatening complications by following these guidelines.

### 54 PROFESSIONAL GROWTH CNLs make a difference!

By Michelle Sheets, MSN, RN, CNL; Barbara Bonnah, MSN, RN, CNL; Jennifer Kareivis, MSN, RN, CNL; Pamela Abraham, MSN, RN, CNL; Marianne Sweeney, MSN, RN, CNL; and Judd Strauss, MSN, RN, CNL  
Discover how one group of clinical nurse leaders (CNLs) became the catalysts for change at their facility.

# Nursing2012<sup>®</sup>

departments

Our mission at *Nursing2012*

is to improve nursing practice by providing evidence-based practical information with a reader-friendly approach.

**Winner of the 2012 bronze ASHPE award for best how-to article!**

**Winner of the 2011 silver Folio award for best article!**



9

## 6 EDITORIAL

If you can't say something nice...

## 8 LETTERS

Tattoo acceptance...correcting an error...kudos from our Nurse of the Year

## 9 ETHICAL PROBLEMS

Disclosing a dangerous secret...should this patient be discharged?

## 10 MEDICATION ERRORS

Arista AH/Arixtra confusion...no margin for error with high-alert drugs...misinterpreted handwriting...don't confuse Bio-T-Gel with OTC T-Gel shampoo

## 11 INSPIRING CHANGE

Planning for research day

## 13 DRUG NEWS

Comparing warfarin and aspirin for heart failure...beware of counterfeit Adderall sold online...deaths spark fingolimod reevaluation...calcium supplements increase risk of MI

## 14 LEGAL QUESTIONS

Dealing with a missed dose...sued for a long-ago medication error

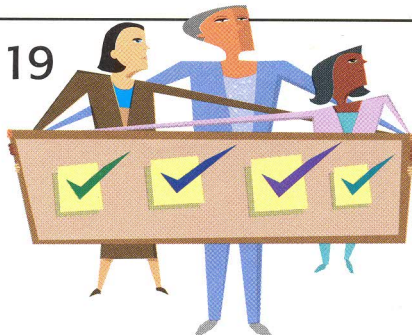
## 16 STUDENT VOICES

Successful study strategies

## 19 CLINICAL ROUNDS

Factors predicting satisfaction with care on a nursing unit...“pull to sit” test may identify autism early...patient expectations shown to influence pain perception...and more

19



## 18 About Nursing2012

## 70 Advertisers' Index

## 71 Careers & Events

### CEs coming next month

New guidelines for unstable angina and NSTEMI

Respecting professional boundaries

Visit us on the Web...

at [www.Nursing2012.com](http://www.Nursing2012.com)



Join us on Facebook

LOG ONTO Facebook.com

SEARCH NsgJournal

CLICK on Like!



Follow us on Twitter

[www.twitter.com/NsgJournal](http://www.twitter.com/NsgJournal)

### > ONLINE-ONLY CONTENT <

at [www.Nursing2012.com](http://www.Nursing2012.com)

### Remembering visionaries in nursing practice

By Sandra C. Voda, MSN, RN-C, ONC

*Nursing2012* (ISSN 0360-4039; online ISSN 1538-8689) is published monthly by Lippincott Williams & Wilkins at 16522 Hunters Green Parkway, Hagerstown, MD 21740-2116, with editorial and advertising headquarters at 323 Norristown Rd., Suite 200, Ambler, PA 19002-2758. Periodicals postage paid at Hagerstown, MD 21740 and at additional mailing offices. Copyright © 2012 by Wolters Kluwer Health | Lippincott Williams & Wilkins. All world rights reserved. Postmaster: Send changes of address to *Nursing2012*, P.O. Box 1550, Hagerstown, MD 21740.

The publisher disclaims responsibility for adverse effects resulting directly or indirectly from suggested procedures/medication dosages or the reader's misunderstanding of the content. All published patient initials are fictitious to protect confidentiality. Any similarity to actual individuals is purely coincidental.

72



## 59 PATIENT SAFETY

What patients need to know about CAM

## 63 INFOBYTES

Online resources for stroke prevention

## 64 CLINICAL QUERIES

Understanding sickle cell disease

## 66 CONTROLLING PAIN

How substance abuse impacts pain management

## 72 ACTION STAT

Tooth avulsion

To enter our  
**Nurse of the Year**  
contest, see page 7.

**DYK?**  
As an individual subscriber, you can access all of these articles **free** online at [www.Nursing2012.com](http://www.Nursing2012.com).