

Elevate | Inspire | Innovate | Energize

Nursing 2012[®]

THE PEER-REVIEWED JOURNAL OF CLINICAL EXCELLENCE

www.Nursing2012.com

วารสารใหม่ประจำเดือน
สิงหาคม2555.....

Managing fatigue

in patients with multiple sclerosis

26

Nursing
SERIALS



001752
bib:13399108162

JUNE • VOL. 42 NO. 6

บริษัท เมอร์คิวรี ดาต้า จำกัด

เลขที่ 59/70 หมู่ที่ 6 ถนนงามวงศ์วาน

แขวงทุ่งสองห้อง เขตหลักสี่ 1,250 bath

กรุงเทพฯ 10210 โทร. 0-2591-6515,16

CE ULTRAFILTRATION
30

CE THE LATEST ON
CLABSI PREVENTION
41

**NURSES AND
BODY ART**
62



Wolters Kluwer
Health

Lippincott
Williams & Wilkins



Nursing 2012

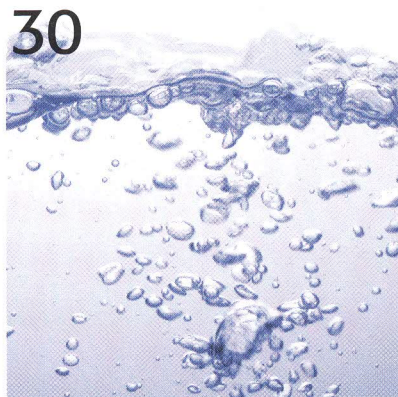
Winner of 2012
silver ASHPE awards for
best peer-reviewed journal
and best new department!

features

30 Is this patient with heart failure a candidate for ultrafiltration?

By Kara W. Streets, MS, BSN, RN, CEN, and Sharon M. Vickers, MSN, RN, CEN
Using convection to remove sodium and water from volume-overloaded patients, ultrafiltration effectively treats certain patients with heart failure without significantly disturbing their vital signs, serum electrolytes, renal function, or intravascular volume. Discover how this easily instituted treatment can reduce length of stay and readmissions for some patients with heart failure.

CE CONNECTION



41 Preventing central line-associated bloodstream infections (CLABSI)

By Cheryl Dumont, PhD, RN, CRNI, and Denise Nesselrodt, MSN, RN, CIC
Applying the latest evidence-based recommendations for CLABSI prevention can dramatically decrease infection rates. Review the evidence here, then find out how applying current best-practice recommendations can reduce complications and prevent deaths.

For immediate CE test processing, see our website at <http://www.nursingcenter.com/ce/nursing>.

26 Managing fatigue in patients with multiple sclerosis

By Carolyn M. Johnson, MSN, RN, CNL, CNRN
For many patients with multiple sclerosis, fatigue is the most debilitating symptom. Explore how these patients experience fatigue and learn strategies to help them improve their quality of life.



58 PROFESSIONAL GROWTH Direct care nurses transitioning to clinical faculty

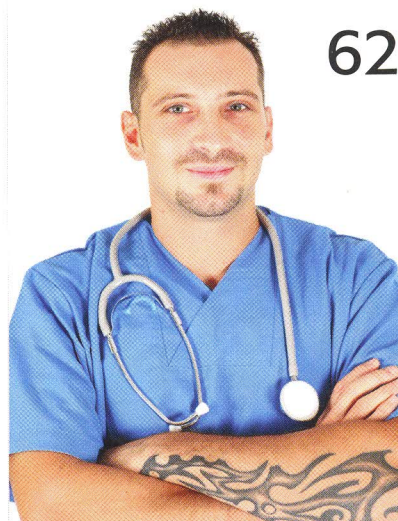
By Abigail Mitchell, DHEd, MSN, RN, and Malena King-Jones, MS, RN
You may already be qualified to become a clinical faculty member. Find out why the demand for these nurses is so high and what practical steps you can take to make the transition.

39 PATIENT EDUCATION SERIES Nonmelanoma skin cancers

By Susan Simmons, PhD, ARNP-BC
After reviewing basal cell and squamous cell skin cancers with your patients, offer them this handout to take home.

48 SHARING Many shades of gray

By Lynn M. Conlon, BSN, RN
An experienced nurse knows that giving good nursing care isn't all black and white.



62 ISSUES IN NURSING Nurses and body art: What's your perception?

By Ruth A. Wittmann-Price, PhD, RN, CNS, CNE; Karen K. Gittings, DNP, RN, CCRN; and Kerrith McDowell Collins, RN
How are tattoos and piercings perceived by patients and healthcare employees? The evidence is scant. Join the discussion about whether body art on nurses affects quality of care.

51 Mitochondrial diseases: Problems in the power plant

By Gail Reiner, DNP, MS, MA, FNP-c, and Jan Panyard-Davis, RN
Dysfunction of three or more organ systems without a unifying diagnosis signifies the need to evaluate a patient for mitochondrial disease. Delve into the various manifestations of these diseases, which sometimes cause serious disabilities or early death, and learn about the testing, care, and education patients and their families need.

To enter our
Nurse of the Year
contest, see page 22.
DYK?
As an individual subscriber, you can access all of these
articles **free** online at www.Nursing2012.com.

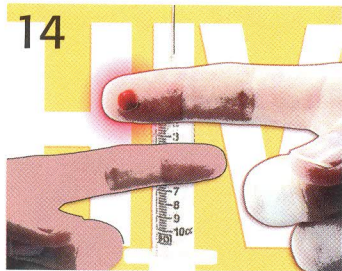
is to improve nursing practice by providing evidence-based practical information with a reader-friendly approach.

Winner of the 2012 bronze ASHPE award for best how-to article!

Winner of the 2011 silver Folio award for best article!

Nursing2012[®]

departments



14
6 EDITORIAL
Re-create yourself this summer

8 LETTERS
Bored to sleep...ministers of urination...designer drug craze

10 DRUG NEWS
Monoclonal antibody decreases severity of plaque psoriasis...diagnostic agent approved for PET brain imaging...I.V. glucose-insulin-potassium doesn't improve outcomes in patients with acute coronary syndromes...new drug treats anemia in adults on dialysis

12 LEGAL QUESTIONS
Think twice before "driving Miss Daisy"...delegating tasks safely...can a pregnant teen give informed consent?

14 ETHICAL PROBLEMS
Patient resistance to HIV testing...shocking accusation...responding to "what would you do?"

16 MEDICATION ERRORS
Wrong route, fatal results...similar labels lead to mix-ups of calcium gluconate and cupric sulfate...misleading package insert for DACTINomycin

18 STUDENT VOICES
Ensuring successful preceptorships

20 INSPIRING CHANGE
Best practices in postoperative feeding

23 CLINICAL ROUNDS
Lack of autonomy linked to moral distress in nurses...curbing antibiotic use is safe and economical...evidence mounts that bariatric surgery works...and more



29 About Nursing2012

70 Advertisers' Index

71 Careers & Events

CEs coming next month

New drugs, part 2
Beer potomania

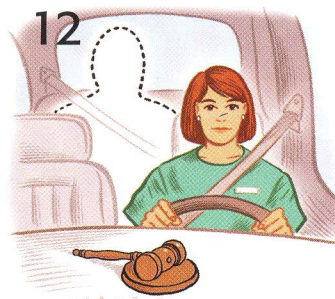
Visit us on the Web...
at www.Nursing2012.com



Join us on Facebook
LOG ONTO Facebook.com
SEARCH NsgJournal
CLICK on Like!



Follow us on Twitter
www.twitter.com/NsgJournal



Nursing2012 (ISSN 0360-4039; online ISSN 1538-8689) is published monthly by Lippincott Williams & Wilkins at 16522 Hunters Green Parkway, Hagerstown, MD 21740-2116, with editorial and advertising headquarters at 323 Norristown Rd., Suite 200, Ambler, PA 19002-2758. Periodicals postage paid at Hagerstown, MD 21740 and at additional mailing offices. Copyright © 2012 by Wolters Kluwer Health | Lippincott Williams & Wilkins. All world rights reserved. Postmaster: Send changes of address to Nursing2012, P.O. Box 1550, Hagerstown, MD 21740.

The publisher disclaims responsibility for adverse effects resulting directly or indirectly from suggested procedures/medication dosages or the reader's misunderstanding of the content. All published patient initials are fictitious to protect confidentiality. Any similarity to actual individuals is purely coincidental.



65 PATIENT SAFETY
Caring for patients with limited English proficiency

67 CLINICAL QUERIES
Hydrocephalus after cerebral injury

68 COMBATING INFECTION
Norovirus infection

69 INFOBYTES
Anatomy and physiology resources

72 ACTION STAT
Hydrofluoric acid skin exposure

+
Free!
Sign up for **Nursing2012 eNews**, a monthly e-mail newsletter, for breaking nursing and healthcare news, clinical updates, free article downloads from the current issue, and more! Go to www.nursingcenter.com/regpages/nursingnews.asp to register.