

Elevate | Inspire | Innovate | Energize

# Nursing 2012<sup>®</sup>

THE PEER-REVIEWED JOURNAL OF CLINICAL EXCELLENCE

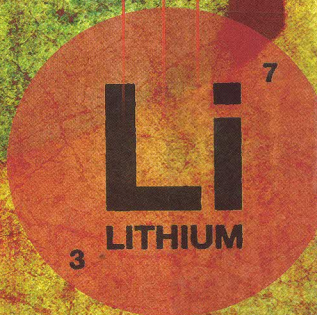
www.Nursing2012.com

วารสารใหม่ประจำเดือน

มิถุนายน .....2555.....

## **CE** Bipolar disorder THREE PHARMACOTHERAPEUTIC PATHS

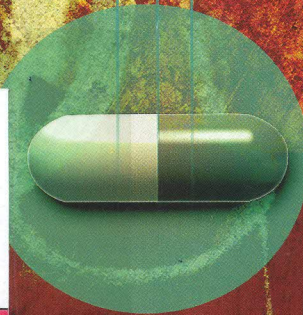
28



Nursing  
SERIALS



001614  
bib:13399108162



MAY • VOL. 42 NO. 5

บริษัท เมอร์คิวรี ดาต้า จำกัด

เลขที่ 59/70 หมู่ที่ 6 ถนนงามวงศ์วาน

แขวงทุ่งสองห้อง เขตหลักสี่ 19280 bath

กรุงเทพฯ 10210 โทร. 0-2591-6515,16

**NURSES WEEK  
TRIBUTE 26**

**CE** TURN DOWN THE  
HEAT ON MALIGNANT  
HYPERTHERMIA 38



Wolters Kluwer  
Health

Lippincott  
Williams & Wilkins

# Nursing 2012

features



28

## Three medication pathways for bipolar disorder

By Tim Blake, MS, RN

Caring for patients who have bipolar disorder requires monitoring them for adverse drug reactions and helping them avoid hazardous interactions—all while making sure they maintain therapeutic blood levels. This article will broaden your understanding of lithium, antiepileptics, and atypical antipsychotics, medications commonly used to manage the ups and downs of bipolar disorder.

## CE CONNECTION



38

## Malignant hyperthermia: Turn down the heat

By Fay Mitchell-Brown, MSN, BSN, RN

Surgical patients with this inherited disorder can experience sudden, deadly reactions to the muscle relaxant succinylcholine and certain inhalational anesthetics. If you care for patients before, during, or after surgery, don't be caught off guard. Refresh your knowledge about how to identify patients at risk, recognize early signs of trouble, and respond confidently to a crisis.

For immediate CE test processing, see our website at <http://www.nursingcenter.com/ce/nursing>.

26 NURSES WEEK TRIBUTE

## To a new generation of nurses

By Judy Meinecke, RN, IBCLC

At a special graduation ceremony, an experienced nurse reflects on what her nursing career has meant to her and welcomes a new generation into the profession.

26



37 PATIENT EDUCATION SERIES

## Benign prostatic hyperplasia

By Daria Kring, PhD, RN-BC

Educate patients who have an enlarged prostate gland about tests and treatments they may need, then offer this handout to take home.

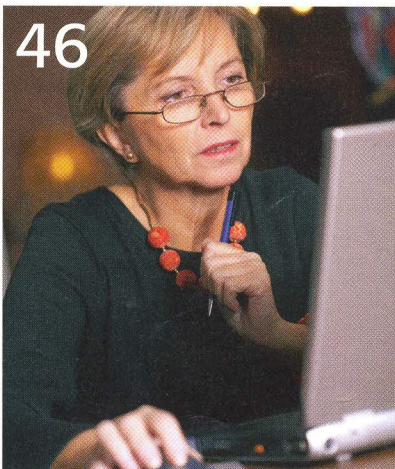
46 PROFESSIONAL GROWTH

## What's a peer-reviewed journal?

By Rose Guerrieri, MLIS, RN

Find out how peer review ensures both clarity of communication and scientific validity in nursing and other scholarly publications. Then, whether you're a reader or a potential author of one of these high-quality articles, explore the nuts and bolts of the process.

46



> **BONUS CONTENT** <  
pages 58 to 66:

### Critical Care Insider

Save the brain with therapeutic hypothermia

Guiding warfarin therapy with genetic testing

To enter our  
**Nurse  
of the  
Year**  
contest,  
see page 17.

DYK?

As an individual subscriber, you can access  
all of these articles **free** online at  
[www.Nursing2012.com](http://www.Nursing2012.com).

# Nursing2012<sup>®</sup>

## departments

**Winner of 2011 silver  
Folio: award for best article!**

**Winner of the 2011  
bronze ASHPE award for  
best how-to article!**

12



### 6 EDITORIAL

If it's broken, fix it!

### 8 LETTERS

Play it SAFE for diabetes care... Facebook "friending" can lead to favoritism... bottom-line mentality contributes to errors

### 10 MEDICATION ERRORS

Misleading heparin vial label... nurses say mistakes held against them... electronic database shortcomings for documenting allergies... stay away from multidose vials

### 12 ADVICE P.R.N.

Donating blood after getting a tattoo... why so many admissions from the ED?... documenting an incident at change of shift

### 14 TRANSITIONS

CPR in older adults: What's the evidence?

### 16 DRUG NEWS

Protease inhibitors and some statins interact... amantadine improves functional recovery after head trauma... new drug reduces ocular hypertension in patients with glaucoma... methylnaltrexone effective for opioid-induced constipation

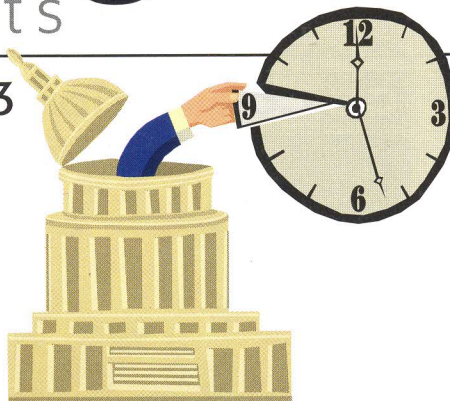
### 18 RESEARCH CORNER

Nurses' experiences in the first 18 months of employment

### 23 CLINICAL ROUNDS

Laws limiting mandatory OT are working... needlestick safety initiatives reduce injuries... home health visits improve outcomes of children with asthma... and more

23



### 67 About *Nursing2012*

### 69 Advertisers' Index

### 70 Classified Advertisements

### CEs coming next month

Ultrafiltration for heart failure

Preventing central line-associated  
bloodstream infections

Visit us on the Web...

at [www.Nursing2012.com](http://www.Nursing2012.com)



Join us on Facebook

LOG ONTO Facebook.com

SEARCH NsgJournal

CLICK on Like!



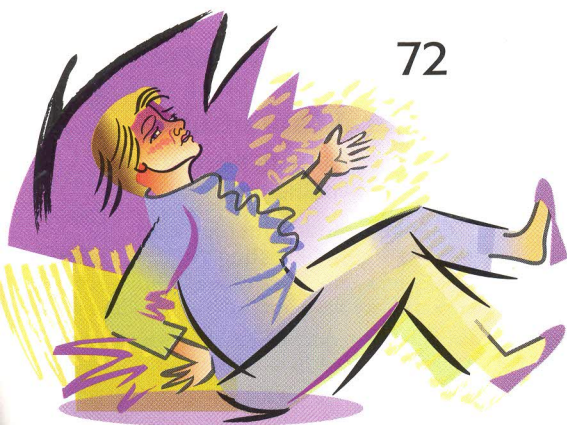
Follow us on Twitter

[www.twitter.com/NsgJournal](http://www.twitter.com/NsgJournal)

*Nursing2012* (ISSN 0360-4039; online ISSN 1538-8689) is published monthly by Lippincott Williams & Wilkins at 16522 Hunters Green Parkway, Hagerstown, MD 21740-2116, with editorial and advertising headquarters at 323 Norristown Rd., Suite 200, Ambler, PA 19002-2758. Periodicals postage paid at Hagerstown, MD 21740 and at additional mailing offices. Copyright © 2012 by Wolters Kluwer Health | Lippincott Williams & Wilkins. All world rights reserved. Postmaster: Send changes of address to *Nursing2012*, P.O. Box 1550, Hagerstown, MD 21740.

The publisher disclaims responsibility for adverse effects resulting directly or indirectly from suggested procedures/medication dosages or the reader's misunderstanding of the content. All published patient initials are fictitious to protect confidentiality. Any similarity to actual individuals is purely coincidental.

72



### 50 PATIENT SAFETY

Measuring height and weight accurately

### 54 CLINICAL QUERIES

Are cosmetics safe?

### 72 ACTION STAT

Cauda equina syndrome



# Free!

Sign up for *Nursing2012 eNews*, a monthly e-mail newsletter, for breaking nursing and healthcare news, clinical updates, free article downloads from the current issue, and more! Go to [www.nursingcenter.com/regpages/nursingnews.asp](http://www.nursingcenter.com/regpages/nursingnews.asp) to register.