

JOURNAL OF Gerontological Nursing®

FOR NURSING CARE OF OLDER ADULTS

Cited in MEDLINE/PubMed



Sharing lived experiences

Using blogs to explore strategies of caregiving

Social robots for individuals with dementia

Osteoarthritis pain and physical function

Identifying discrepancies during medication reconciliation in post-acute long-term care settings

Usability testing of a clinical decision support app for urinary tract infection

Evidence-Based Practice Guideline

Assessing heart failure in long-term care facilities

1,970.00

Bath

JOURNAL OF Gerontological Nursing®

006549



FEATURE ARTICLES

25 Nonpharmacological Strategies Used By Family Caregivers of Persons With Alzheimer's Disease and Related Dementias as Presented in Blogs

As caregiving and health care become increasingly digitalized, the current study demonstrates the value of social media as a resource for developing novel intervention techniques.

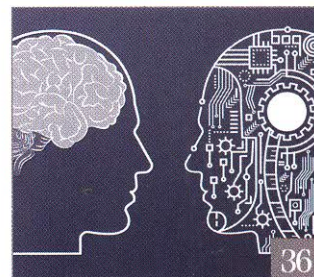
Joel G. Anderson, PhD, CHTP, FGSA; Elizabeth Hundt, PhD, APRN, NP-C, ACNS-BC; and Karen M. Rose, PhD, RN, FGSA, FAAN



36 Evaluation of a Companion Robot for Individuals With Dementia: Quantitative Findings of the MARIO Project in an Irish Residential Care Setting

Findings from the current study suggest a companion robot may be an acceptable component of social care for persons with dementia.

Eva Barrett, PhD; Megan Burke, MA; Sally Whelan, MA, RGN, RNT; Adam Santorelli, PhD; Barbara Luz Oliveira, PhD; Filippo Cavallo, PhD, MSc; Rose-Marie Dröes, PhD; Louise Hopper, PhD; Ainna Fawcett-Henesy, FRCN, MA; Franka J.M. Meiland, PhD; Gail Mountain, PhD, MPhil, DipCOT, FRCOT; Wendy Moyle, PhD, MHSc, RN; Massimiliano Raciti, MSc; Geoff Pegman, FloD; Aimee Teare, BA; Daniele Sancarolo, MD; Francesco Riccardi, PhD; Grazia D'Onofrio, PsyD; Francesco Giuliani, MSc; Alessandro Russo, PhD; Andy Bleaden, BA; Antonio Greco, MD; and Dymphna Casey, PhD, MA, RGN



46 The Relationship Between Pain and Physical Function: Mediating Role of Sleep Quality, Depression, and Fatigue

Pain management may be the most important consideration for the maintenance of physical functioning in individuals with osteoarthritis.

Myung Kyung Lee, PhD, RN, OCN; and Ji Hyun Oh, PhD, RN



SECTIONS

5 Geropharmacology

Identifying Potential Medication Discrepancies During Medication Reconciliation in the Post-Acute Long-Term Care Setting

Heather Cook, PharmD; Janee Parson, PharmD; and Nicole Brandt, PharmD, MBA, BCGP, BCPP, FASCP

11 Technology Innovations

Usability Testing of a Mobile Clinical Decision Support App for Urinary Tract Infection Diagnosis in Nursing Homes

Blaine Reeder, PhD; Cynthia Drake, MA; Mustafa Ozkaynak, PhD; and Heidi L. Wald, MD, MSPH

18 Evidence-Based Practice Guideline

Assessing Heart Failure in Long-Term Care Facilities

Candace C. Harrington, PhD, DNP, APRN, AGPCNP-BC, CDP, CADDCT

DEPARTMENTS

2 Guest Editorial

55 AGS Update