

GERONTOLOGICAL NURSING®

วารสารใหม่ประจำเดือน
มกราคม.....2555.....

FOR NURSING CARE OF OLDER ADULTS

FOCUS ON Elder abuse

- Recognizing & reporting elder abuse
- Elder abuse examples & interventions



EVIDENCE-BASED PRACTICE GUIDELINE

- Elder abuse prevention

Plus:

Home telehealth

Pictograph-based discharge instructions

Managing residents with problematic behaviors secondary to dementia

Journal of gerontologic..
SERIALS



001215
bib:13399108126

บริษัท เมอร์คิวรี ดาต้า จำกัด

เลขที่ 59/70 หมู่ที่ 6 ถนนงามวงศ์วาน

แขวงทุ่งสองห้อง เขตหลักสี่

1,300 bath

กรุงเทพฯ 10210

EARN **2.1** CONTACT HOURS
SEE PAGE 36

GERONTOLOGICAL NURSING®



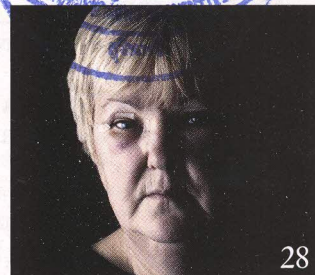
FEATURE ARTICLES

28

The Role of Health Care Providers in Recognizing and Reporting Elder Abuse

The indicators of elder abuse aren't always as obvious as bruising and broken bones, and nurses should be familiar with the more subtle signs of mistreatment. Knowing the "3 Rs" can help you handle suspected abuse cases.

Sheena Hess, BSN, RN



28

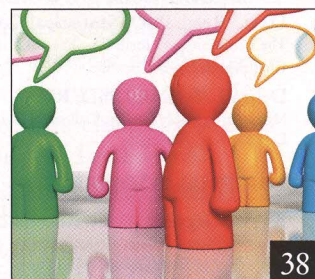


38

Home Telehealth: Patient Satisfaction, Program Functions, and Challenges for the Care Coordinator

Veterans Affairs patients interviewed about home telehealth use repeatedly mentioned three useful functions about the service. Find out what they loved—and what frustrated them.

Lance B. Young, PhD, MBA; Linda Foster, RN, MSN; Aaron Silander, MSW; and Bonnie J. Wakefield, PhD, RN



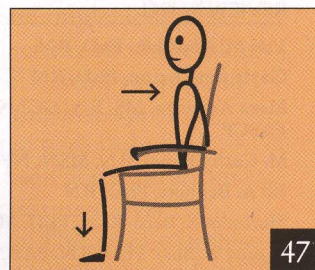
38

47

Pictograph-Based Discharge Instructions for Low-Literate Older Adults After Hip Replacement Surgery: Development and Validation

For individuals with low literacy skills or for whom English is a second language, complex instructions can present communication challenges. Learn how stick figures can simplify post-surgery "dos" and "don'ts."

Jeungok Choi, PhD, MSN, MPH



47

SECTIONS

11

Evidence-Based Practice Guideline

Elder Abuse Prevention

Jeanette M. Daly, PhD, RN; and Deborah Perry Schoenfelder, PhD, RN

19

Clinical Concepts

The Nursing Role in Reporting Elder Abuse: Specific Examples and Interventions

Carolyn E. Ziminski, BSN, RN; and Linda R. Phillips, PhD, RN, FAAN

24

Diagnosis: Dementia

Psychiatric Referral Versus Federal Regulations: A Balancing Act for Long-Term Care Nurses

Timothy J. Legg, PhD, RN-BC, CNHA, GNP-BC, CDP; and Deborah S. Adelman, PhD, RN, NE-BC, CNS

DEPARTMENTS

3 Editorial

5 Foundation News

8 News

10 Product News

35 Information for Authors

36 CNE Quiz