

วารสารใหม่ประจำเดือน

พฤศจิกายน.....2556.....

JOURNAL OF
**PSYCHOSOCIAL
NURSING**
AND MENTAL HEALTH SERVICES

October 2013 Volume 51, Number 10

Inked and Pierced

Should body art be considered high-risk behavior?

Undergraduate addiction training program

Preparing nurses to address patients with risky alcohol and drug use—page 29

Moving on from services

Users' perspectives of the care programme approach to borderline personality disorder—page 38

Healio.com ACCESS FULL TEXT
at Healio.com/JPN

Journal of psychosocial..
SERIALS



002928

bib:13399108125

บริษัท เมอร์คิวรี ดาต้า จำกัด

เลขที่ 59/70 หมู่ที่ 6 ถนนงามวงศ์วาน

แขวงทุ่งสองห้อง เขตหลักสี่

กรุงเทพฯ 10210 โทร. 0-2591-6515,16

1,396 bath

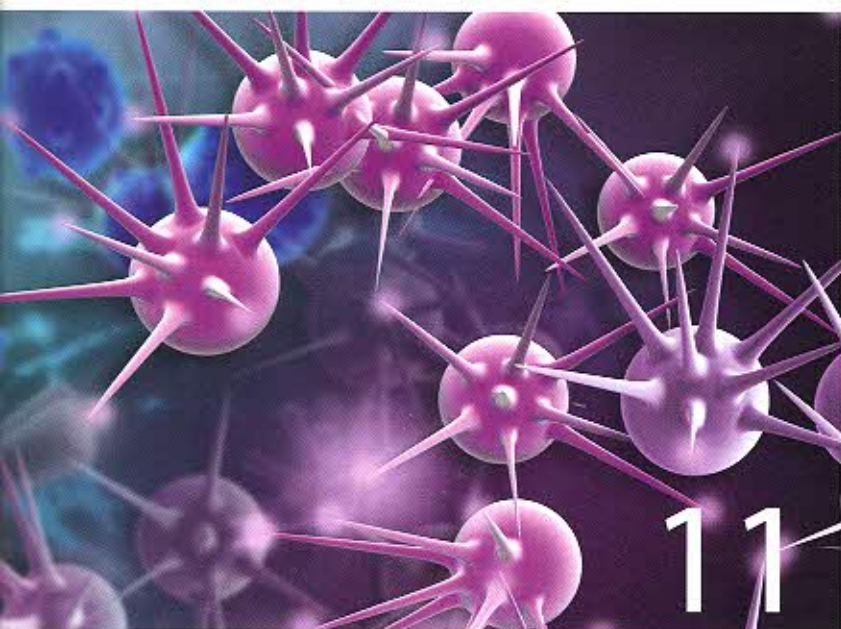
SLACK
INCORPORATED

EARN CONTACT HOURS PAGE 46

9 Drug Chart: Sleep Disorders

11 Antidepressants and Disease

14 Pregaming in Teens



Pharmacology Focus

- 6** Product Update
- 9** Clip & Save: Drug Chart
 Sleep Disorders
- 11** More on Antidepressant Drugs
 and Infectious Disease
Robert H. Howland

Original Articles

- 20** **College Students With Body Art:
 Well-Being or High-Risk Behavior?**
 Students in a sociology course were surveyed to determine just how many tattoos and piercings were associated with higher risk behavior and emotional distress.
Donna C. Owen, Myrna L. Armstrong, Jerome R. Koch, and Alden E. Roberts

- 29** **Screening, Brief Intervention, and Referral
 to Treatment: Overview of and Student
 Satisfaction with an Undergraduate
 Addiction Training Program for Nurses**
 Additional clinical practice and skill development may be beneficial to increasing students' competence in delivering care to patients with risky substance use.
Ann M. Mitchell, Kathryn Puskar, Holly Hagle, Heather J. Gotham, Kimberly S. Talcott, Lauren Terhorst, Marie Fioravanti, Irene Kane, Eric Hulse, Peter Luongo, and Helen K. Burns

- 38** **A Qualitative Study on the Use of
 the Care Programme Approach with
 Individuals with Borderline Personality
 Disorder: A Service User Perspective**
 Giving service users a voice encourages empowerment and satisfaction with mental health services.
Bertha Rogers and Emma Dunne

Sections

- 3** Guest Editorial
- 5** Letters to the Editor
- 7** News
- 14** **Trouble Brewing: Pregaming Among
 High School and Incoming College
 Students**
Byron L. Zamboanga, Cara C. Tomaso, Amie L. Haas, Janine V. Olthuis, Sarah Borish, and Brian Borsari
- 46** CNE Quiz
- 48** NARSAD Art

