

JPN JOURNAL OF PSYCHOSOCIAL NURSING®

January 2013 Volume 31, Number 1

AND MENTAL HEALTH SERVICES

วารสารใหม่ประจำเดือน
กรกฎาคม.....2556.....

Self-harm behaviors in borderline personality disorder

Nurses' attitudes could influence care

Ketamine

The new drug for treatment-resistant depression?—page 11

Intellectual & developmental disabilities

Avoid diagnostic overshadowing in your older clients—page 15

Journal of psychosocial..
SERIALS

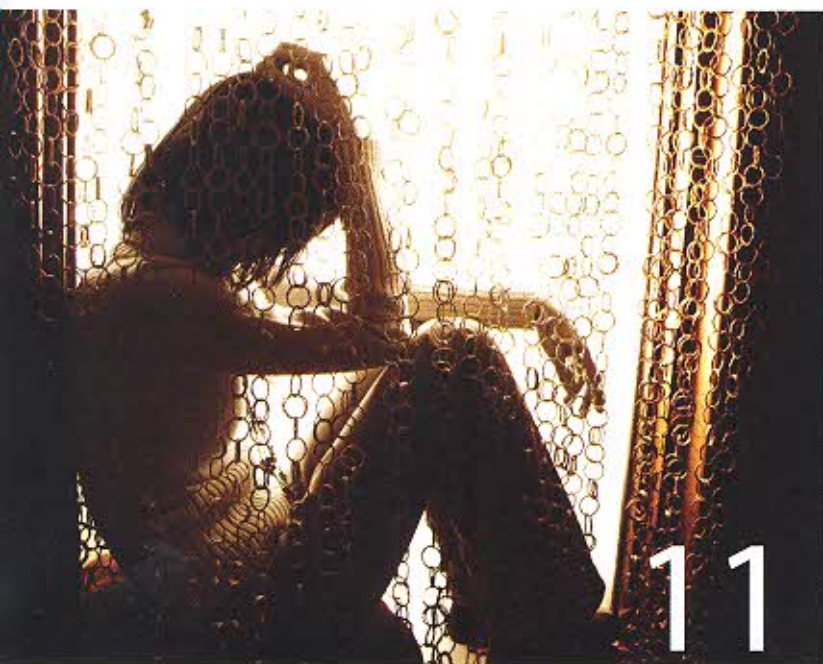


002603
bib:13399108125

133916 bath

SLACK
INCORPORATED

EARN CONTACT HOURS PAGE 44



Pharmacology Focus

- 8** Product Update
- 9** Clip & Save: Drug Chart 2012 in Review
- 11** Ketamine for the Treatment of Depression
Robert H. Howland

Original Articles

- 20** Psychiatric Nurses' Attitudes Toward Patients with Borderline Personality Disorder Experiencing Deliberate Self-Harm
A questionnaire to measure attitudes toward patients who deliberately harm themselves was adapted for this specific psychiatric population. Find out what contributes to positive therapeutic attitudes.
Judith L. Hauck, Barbara E. Harrison, and Anthony L. Montecalvo
- 31** A Safe Electric Medical Bed for an Acute Inpatient Behavioral Health Care Setting
Read about one hospital's effort to tweak traditional medical beds, ensuring increased safety and ease of use.
John J. Wagner and Todd N. Ingram
- 35** Suicide in Hospitalized Medical-Surgical Patients: Exploring Nurses' Attitudes
Is your age, educational level, or religion affecting your ability to accurately assess a patient's suicide risk?
Kathleen Neville and Nora M. Roan

Sections

- 4** Editorial
- 6** Commentary
- 10** News
- 15** Healthy Aging for Older Adults with Intellectual and Developmental Disabilities
Kathleen M. Bishop, Laura M. Robinson, and Shelley VanLare
- 44** CNE Quiz
- 48** NARSAD Art
- C3** Information for Authors