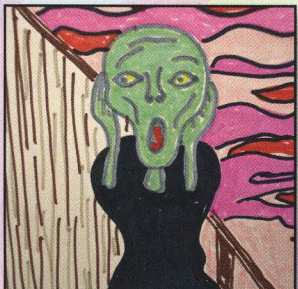


JPN JOURNAL OF PSYCHOSOCIAL NURSING AND MENTAL HEALTH SERVICES

June 2011 Volume 49, Number 6

วารสารใหม่ประจำเดือน
กันยายน2554.....

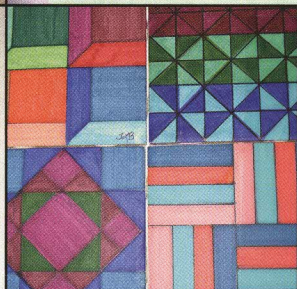
"I am part of this new building" The art of a successful facility move




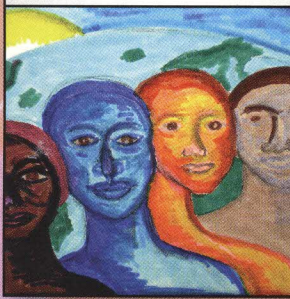
Antipsychotic drug-induced motor syndromes
Pharmacological treatments for tardive dyskinesia—page 13



Roulette debt
Treating older adults with gambling problems—page 38



Journal of psychosocial..
SERIALS

00955
bib:13399108125



1,300 bath



EARN 4.0 CONTACT HOURS PAGE 44



Pharmacology Focus

- 5** Product Update
- 11** Clip & Save: Drug Chart
Bipolar Disorders
- 13** Drug Therapies for Tardive
Dyskinesia: Part 1
Robert H. Howland

Original Articles

- 22** Alcohol-Related Content in
Undergraduate Nursing Curricula in
the Northeastern United States
The study results indicate that nurses are not properly
equipped to assess patients with possible alcohol use
issues. Have you had adequate education in this area?
Michelle A. Mollica, Zena Hyman, and Catherine M. Mann
- 32** Using Art to Empower Clients During a
Facility Move
Psychiatric clients moving into a new building had
a direct hand in decorating their new home. Several
photos of their expressive artwork are included.
Lawrence A. Osborn and Frederic B. Tate
- 38** Does Your Older Adult Client Have a
Gambling Problem?
Sometimes an innocent recreational activity can
become problematic for older adults. Learn which
clients may be most at risk.
Cindy Sullivan Kerber, Emily Schlenker, and Kari Hickey

Sections

- 2** Guidelines for Authors
- 6** Guest Editorial
- 8** News
- 17** Update on International Adoption:
Focus on Russia
Teena M. McGuinness and Cheryl Broadus Robinson
- 44** CNE Quiz
- 48** NARSAD Art

