

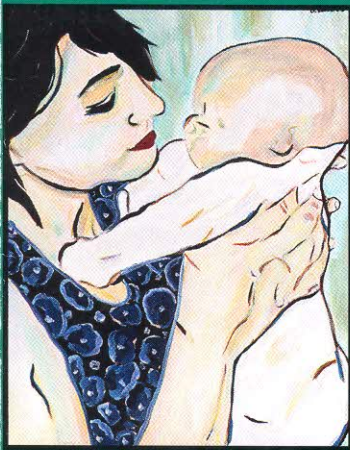
Journal of
Obstetric,
Gynecologic, &
Neonatal Nursing



May 2021
Volume 50 • Number 3

JOGNN

*Scholarship for the Care of Women,
Childbearing Families, & Newborns*



EDITORIAL

Thoughts on the Conduct and
Dissemination of Qualitative Research

LETTER TO THE EDITOR

Potential Issues in the Freezing of Breast
Milk

REVIEWS

Integrative Review of Early Life Adversity
and Cortisol Regulation in Pregnancy

Scoping Review on the Use of Early
Warning Trigger Tools for Women in Labor

Integrative Review of the Experiences
of Registered Nurses Who Support
Breastfeeding Women

RESEARCH

Infertility Stress, Cortisol, Coping, and
Quality of Life in U.S. Women Who
Undergo Infertility Treatments

Deciding on Home Birth

Women's Perspectives of Childbirth in
Kiboga, Uganda

Transcutaneous Bilirubin Levels and Risk
of Significant Hyperbilirubinemia in
Early-Term and Term Newborns

HEALTH CARE IMPROVEMENT AND EVALUATION

Improving Nurse Self-Efficacy and
Increasing Continuous Labor Support
With the Promoting Comfort in Labor
Safety Bundle

Implementation of Cue-Based Feeding to
Improve Preterm Infant Feeding
Outcomes and Promote Parents'
Involvement

PRINCIPLES & PRACTICE

Education in Trauma-Informed Care in
Maternity Settings Can Promote Mental
Health During the COVID-19 Pandemic

SPECIAL REPORT

Current Resources for Evidence-Based
Practice, May 2021

ONLINE SUPPLEMENT

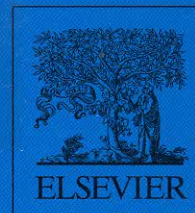
Perinatal Clinical Nurse Educator: Clinical
Competencies and Education Guide

Journal of obstetric gy
SERIALS



006935
bib:13399108124

11,000 B



EDITORIAL

- 237 **Thoughts on the Conduct and Dissemination of Qualitative Research**
The Associate Editor describes common problems associated with reporting the results of qualitative research.
Cheryl Tatano Beck

LETTER TO THE EDITOR

- 240 **Potential Issues in the Freezing of Breast Milk**
Frost-free freezers affect the storage of breast milk.
George Stratigopoulos

REVIEWS

- 242 **Integrative Review of Early Life Adversity and Cortisol Regulation in Pregnancy**
Early life adversity in women was associated with physiologic cortisol alterations that are evident during pregnancy.
Crystal Modde Epstein, Julia F. Houfek, Michael J. Rice, and Sandra J. Weiss
- 256 **Scoping Review on the Use of Early Warning Trigger Tools for Women in Labor**
Trigger tools can help with early identification of deteriorating clinical condition, but further research is needed to refine tools and understand best practices for implementation.
Samantha Bernstein
- 266 **Integrative Review of the Experiences of Registered Nurses Who Support Breastfeeding Women**
Many RNs who support breastfeeding women do not have targeted prelicensure education, nor do they receive in-depth organizational training about breastfeeding in their workplaces.
Nicole Prokop, Shahla Meedya, and Jenny Sim

RESEARCH

- 275 **Infertility Stress, Cortisol, Coping, and Quality of Life in U.S. Women Who Undergo Infertility Treatments**
Greater infertility-related stress, hypocortisolism, use of active-avoidance coping, and low quality of life were found in U.S. women undergoing infertility treatments.
Alison Swift, Pamela Reis, and Melvin Swanson
- 289 **Deciding on Home Birth**
Participants used their agency to claim maternal space when planning home births with certified nurse-midwives.
Jessica Coburn and Jennifer J. Doering
- 300 **Women's Perspectives of Childbirth in Kiboga, Uganda**
Findings revealed themes related to the birthing experiences of women in Kiboga, Uganda, and raise awareness of women's low cultural status.
Ofra Halperin
- 307 **Transcutaneous Bilirubin Levels and Risk of Significant Hyperbilirubinemia in Early-Term and Term Newborns**
Early-term newborns have a statistically significant increased risk of jaundice that requires treatment and higher TcB levels than term newborns.
Serdar Umit Sarici, Murat Ozcan, Melis Akpinar, Demet Altun, Yuksel Yasartekin, Esad Koklu, Muhittin A. Serdar, and Dilek Sarici
- 316 **Improving Nurse Self-Efficacy and Increasing Continuous Labor Support With the Promoting Comfort in Labor Safety Bundle**
Implementing the Comfort in Labor Safety Bundle improved nurse self-efficacy and the frequency of continuous labor support.
Katie Page, Alan Early, and Rachel Breman

HEALTH CARE IMPROVEMENT AND EVALUATION

On Our Cover:

Meeting You, acrylics on canvas. © 2011 by Andrea Edwards. Reproduced with permission.

328 Implementation of Cue-Based Feeding to Improve Preterm Infant Feeding Outcomes and Promote Parents' Involvement

Implementation of cue-based feeding for preterm infants decreased length of stay, time to achieve full oral feedings, and health care costs and increased parents' involvement in the feeding process.

Tesi Thomas, Rebecca Goodman, Ani Jacob, and Deborah Grabher

PRINCIPLES & PRACTICE

340 Education in Trauma-Informed Care in Maternity Settings Can Promote Mental Health During the COVID-19 Pandemic

Education in trauma-informed care can help perinatal clinicians promote the mental health of pregnant women and themselves during the COVID-19 pandemic.

Sue Hall, Amina White, Jerasimos Ballas, Sage N. Saxton, Allison Dempsey, and Karen Saxer

SPECIAL REPORT

352 Current Resources for Evidence-Based Practice, May 2021

A review of new resources to support the provision of evidence-based care for women and infants.

Marit L. Bovbjerg and Sabrina Pillai

ARTICLES ONLINE

Access this and all articles at <http://jognn.org>.

ONLINE SUPPLEMENT

S1 Perinatal Clinical Nurse Educator: Clinical Competencies and Education Guide

Association of Women's Health, Obstetric and Neonatal Nurses