

Journal of
Obstetric,
Gynecologic &
Neonatal Nursing

40
1972-2011

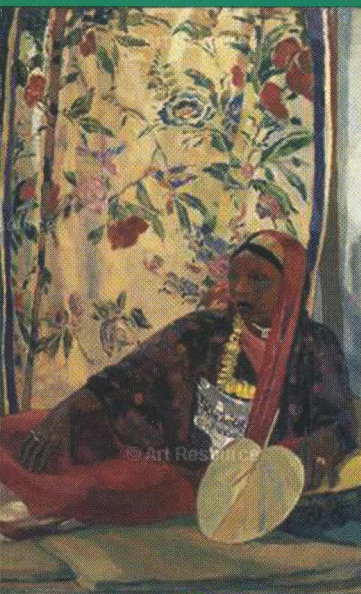
July / August 2011
Volume 40 • Number 4

JOGNN

*Scholarship for the Care of Women,
Childbearing Families & Newborns*

วารสารใหม่ประจำเดือน

มิถุนายน2555.....



EDITORIAL

The Surgeon General's Call to Action to Support Breastfeeding

LETTER

On Electronic Fetal Monitoring Revisited

THEN & NOW

Reflections on Meeting Women's Childbirth Expectations

IN REVIEW

An Integrated Review of Developmental Outcomes and Late-Preterm Birth

RESEARCH

Predicting the Insertion Length for Gastric Tube Placement in Neonates

Abuse-Related Post-Traumatic Stress, Coping, and Tobacco Use in Pregnancy

An Overview of Distribution of Births in United States Hospitals in 2008 with Implications for Small Volume Perinatal Units in Rural Hospitals

Postpartum Depression and Help-Seeking Behaviors in Immigrant Hispanic Women

Enablers and Barriers to Seeking Help for a Postpartum Mood Disorder

CASE STUDY

Maternal Grand Mal Seizure Leads to a Surprising Diagnosis of Dandy-Walker Variant

SPECIAL REPORT

Current Resources for Evidence-Based Practice July/August, 2011

IN FOCUS

Addressing Incarcerated Women's Unique and Unidentified Health Care Needs

Using a Trauma-Informed Framework to Care for Incarcerated Women

End-of-Life Care and Barriers for Female Inmates

A Meta-Synthesis of Women's Postincarceration Experiences

Toward a Gender-Responsive Restorative Correctional Health Care Model

Journal of obstetric gy..

SERIALS



001609
bib:13399108124

6,910 bath

EDITORIAL

387 The Surgeon General's Call to Action to Support Breastfeeding

The Surgeon General's 2011 Call to Action includes 20 specific strategies concerning mothers and families, communities, health care, employment, research and surveillance, and public health infrastructure.

Nancy K. Lowe

LETTER

390 On Electronic Fetal Monitoring Revisited

Michelle L. Murray, Laura Mahlmeister, Charlotte E. Daniels, and Gayle M. Huelsmann

THEN & NOW

394 Reflections on Meeting Women's Childbirth Expectations

Preservation of women's dignity is essential to meeting their expectations for childbirth.

Kathie Records and Barbara L. Wilson

IN REVIEW

399 An Integrated Review of Developmental Outcomes and Late-Preterm Birth

The authors conclude that there are insufficient data to clearly characterize the long-term risks of late-preterm birth, specifically neurodevelopmental, behavioral, cognitive, growth, and functional outcomes.

Haifa A. Samra, Jacqueline M. McGrath, and Michelle Wehbe

RESEARCH

412 Predicting the Insertion Length for Gastric Tube Placement in Neonates

This randomized controlled trial evaluated 3 commonly used methods to predict the gastric tube insertion length in neonates < 1 month corrected age.

Marsha L. Cirgin Ellett, Mervyn D. Cohen, Susan M. Perkins, Coral E. Smith, Kathleen A. Lane, and Joan K. Austin

422 Abuse-Related Post-Traumatic Stress, Coping, and Tobacco Use in Pregnancy

Smoking behavior in pregnancy may be related to the need to cope with symptoms of abuse-related post-traumatic stress.

William D. Lopez, Sara H. Konrath, and Julia S. Seng

432 An Overview of Distribution of Births in United States Hospitals in 2008 with Implications for Small Volume Perinatal Units in Rural Hospitals

These survey data show that 72% of U.S. hospitals with less than 100 births per year meet minimum nurse staffing guidelines for perinatal services.

Kathleen Rice Simpson

440 Postpartum Depression and Help-Seeking Behaviors in Immigrant Hispanic Women

Qualitative data revealed personal, social, and health care system barriers to seeking professional help for symptoms of postpartum depression.

Lynn Clark Callister, Renea L. Beckstrand, and Cheryl Corbett

450 Enablers and Barriers to Seeking Help for a Postpartum Mood Disorder

Stigma about mental illness and gaps in health care were identified as barriers to women seeking help while suffering symptoms of a postpartum mood disorder.

Michelle Foulkes

CASE STUDY

458 Maternal Grand Mal Seizure Leads to a Surprising Diagnosis of Dandy-Walker Variant

Although eclampsia is the most likely diagnosis when a woman suffers a postpartum seizure, other less common etiologies must be considered.

Sherri G. Mendelson

SPECIAL REPORT

463 Current Resources for Evidence-Based Practice July/August, 2011

A review of new resources to support the provision of evidence-based care for women and infants.

Cathy L. Emeis

Continued

On Our Cover:

Albert Weisgerber. Woman from Somalia. 1912.

Location: Neue Pinakothek, Bayerische Staatsgemaltesammlungen, Munich, Germany.

Photo Credit: Bildarchiv Preussischer Kulturbesitz/Art Resource, NY.

IN FOCUS

Addressing Incarcerated Women's Unique and Unidentified Health Care Needs

Guest Editor Barbara Guthrie

468 Addressing Incarcerated Women's Unique and Unidentified Health Care Needs

The guest editor introduces the articles in the series.

Barbara Guthrie

469 Using a Trauma-Informed Framework to Care for Incarcerated Women

CNE The authors describe the use of a trauma informed framework to guide clinical interactions with female inmates.

Holly Harner and Ann W. Burgess

477 End-of-Life Care and Barriers for Female Inmates

The authors describe the need for humane care and provide strategies that can be useful in a complex organizational system.

Susan J. Loeb, Janice Penrod, Christopher S. Hollenbeak, and Carol A. Smith

486 A Meta-Synthesis of Women's Postincarceration Experiences

Research related to women reentering the community post incarceration is synthesized.

Joan A. Flores and Linda Honan Pellico

497 Toward a Gender-Responsive Restorative Correctional Health Care Model

A restorative health care model and accompanying assumptions, constructs, strategies, and future research implications are described.

Barbara Guthrie
