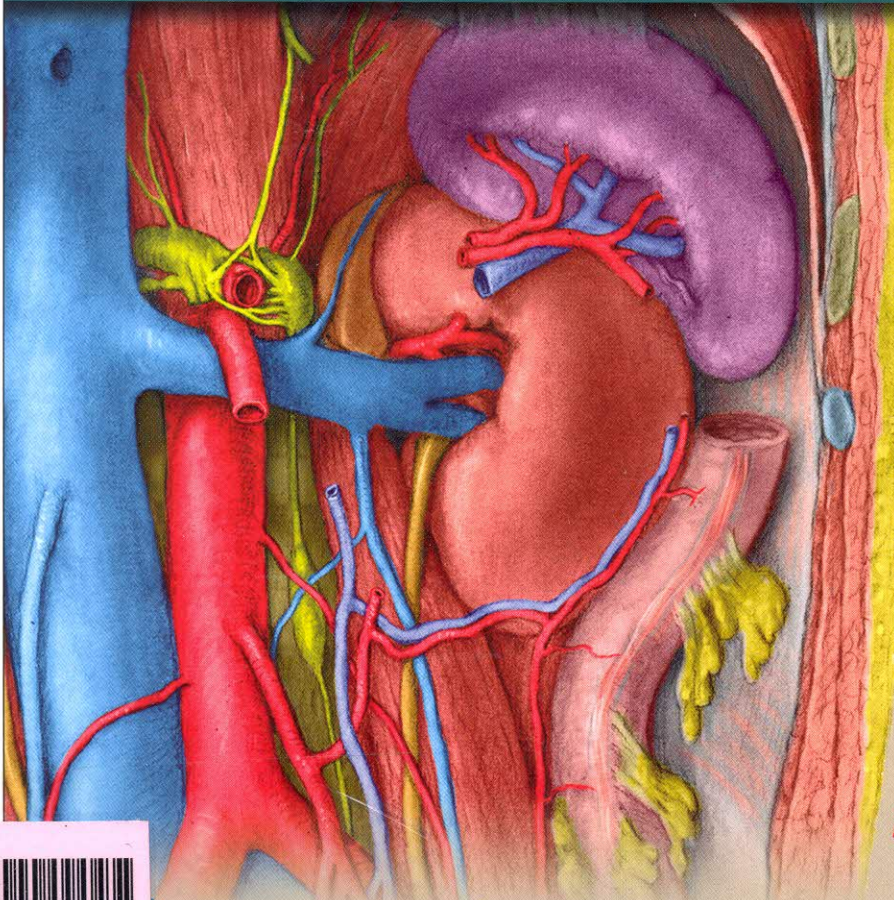


INTERNATIONAL EDITION

Not authorised for sale in United States, Canada, Australia, New Zealand, Puerto Rico or the U.S. Virgin Islands

Grant's Dissector

Edition
16



Alan J. Detton

Wolters Kluwer



10045592

ห้องสมุด วทบ. สุรินทร์

 Wolters Kluwer

Contents

Preface ix

Acknowledgments xi

Figure Credits xix

Introduction 1

CHAPTER 1

The Back 5

SKIN AND SUPERFICIAL FASCIA 5

Dissection Overview 5

- SURFACE ANATOMY 5
- VERTEBRAL COLUMN 6

Dissection Instructions 9

- SKIN INCISIONS 9
- SUPERFICIAL FASCIA 9

Dissection Follow-up 10

SUPERFICIAL MUSCLES OF THE BACK 10

Dissection Overview 10

Dissection Instructions 10

- TRAPEZIUS MUSCLE 10
- LATISSIMUS DORSI MUSCLE 11
- RHOMBOID MAJOR AND RHOMBOID MINOR MUSCLES 11
- LEVATOR SCAPULAE MUSCLE 12

Dissection Follow-up 12

INTERMEDIATE AND DEEP MUSCLES OF THE BACK 13

Dissection Overview 13

Dissection Instructions 13

- SERRATUS POSTERIOR SUPERIOR MUSCLE 13
- SERRATUS POSTERIOR INFERIOR MUSCLE 13
- SPLENIUS MUSCLE 14
- ERECTOR SPINAE MUSCLES 14
- SEMISPINALIS CAPITIS MUSCLE 14
- SEMISPINALIS CERVICIS MUSCLE 14
- MULTIFIDUS MUSCLE 15

Dissection Follow-up 15

SUBOCCIPITAL REGION 16

Dissection Overview 16

- SKELETON OF THE SUBOCCIPITAL REGION 16

Dissection Instructions 16

- SUBOCCIPITAL MUSCLES 16
- CONTENTS OF THE SUBOCCIPITAL TRIANGLE 16

Dissection Follow-up 17

VERTEBRAL CANAL, SPINAL CORD, AND MENINGES 18

Dissection Overview 18

Dissection Instructions 19

- LAMINECTOMY 19
- SPINAL MENINGES 20

Dissection Follow-up 22

CHAPTER 2

The Upper Limb 23

SCAPULAR REGION AND POSTERIOR ARM 23

Dissection Overview 23

- SKELETON OF THE SCAPULAR REGION 23

Dissection Instructions 24

- POSTERIOR SHOULDER MUSCLES 24
- ROTATOR CUFF MUSCLES 25
- POSTERIOR COMPARTMENT OF THE ARM 26

Dissection Follow-up 27

SUPERFICIAL VEINS AND CUTANEOUS NERVES 28

Dissection Overview 28

- SURFACE ANATOMY 28

Dissection Instructions 29

- SKIN INCISIONS 29
- SUPERFICIAL VEINS 29
- CUTANEOUS NERVES 30

Dissection Follow-up 31

PECTORAL REGION 31

Dissection Overview 31

Dissection Instructions 31

- BREAST 31
- SUPERFICIAL FASCIA 31

Dissection Follow-up 32

MUSCLES OF THE PECTORAL REGION 32

Dissection Overview 32

Dissection Instructions 33

- MUSCLES OF THE PECTORAL REGION 33

Dissection Follow-up 34

AXILLA 35

Dissection Overview 35

Dissection Instructions 35

- AXILLA 35
- AXILLARY ARTERY 36
- BRACHIAL PLEXUS 37

Dissection Follow-up 38

ARM (BRACHIUM) AND CUBITAL FOSSA 39

Dissection Overview 39

- SKELETON OF THE ARM AND CUBITAL REGION 39

Dissection Instructions 40

- ANTERIOR COMPARTMENT OF THE ARM MUSCLES 40
- NEUROVASCULATURE OF THE ARM 41
- CUBITAL FOSSA 42

Dissection Follow-up 43

SUPERFICIAL MUSCLES OF THE BACK 44

SCAPULAR REGION AND POSTERIOR COMPARTMENT OF THE ARM 44

FLEXOR REGION OF THE FOREARM 44

Dissection Overview 44

- SKELETON OF THE FOREARM 45

- Dissection Instructions 45
- SUPERFICIAL LAYER OF FLEXOR MUSCLES 45
 - INTERMEDIATE LAYER OF FLEXOR MUSCLES 47
 - VESSELS AND NERVES OF THE ANTERIOR FOREARM 47
 - DEEP LAYER OF FLEXOR MUSCLES 50

Dissection Follow-up 51

PALM OF THE HAND 52

- Dissection Overview 52
- SKELETON OF THE HAND 52
- Dissection Instructions 53
- SKIN INCISIONS 53
 - SUPERFICIAL PALM 53
 - CARPAL TUNNEL 55
 - THENAR MUSCLES 56
 - HYPOTHENAR MUSCLES 57
 - DEEP PALM 57

Dissection Follow-up 58

EXTENSOR REGION OF THE FOREARM AND DORSUM OF THE HAND 59

- Dissection Overview 59
- Dissection Instructions 60
- SUPERFICIAL LAYER OF EXTENSOR MUSCLES 60
 - DEEP LAYER OF EXTENSOR MUSCLES 62

Dissection Follow-up 64

JOINTS OF THE UPPER LIMB 65

- Dissection Overview 65
- Dissection Instructions 66
- STERNOCLAVICULAR JOINT 66
 - ACROMIOCLAVICULAR JOINT 66
 - GLENOHUMERAL JOINT 67
 - ELBOW JOINT AND PROXIMAL RADIOULNAR JOINT 68
 - INTERMEDIATE RADIOULNAR JOINT 69
 - DISTAL RADIOULNAR JOINT AND WRIST JOINT 69
 - METACARPOPHALANGEAL AND INTERPHALANGEAL JOINTS 70

Dissection Follow-up 71

CHAPTER 3

The Thorax 73

PECTORAL REGION 73

INTERCOSTAL SPACE AND INTERCOSTAL MUSCLES 73

- Dissection Overview 73
- SURFACE ANATOMY 73
 - SKELETON OF THE THORAX 74

Dissection Instructions 75

Dissection Follow-up 76

REMOVAL OF THE ANTERIOR THORACIC WALL; THE PLEURAL CAVITIES 77

- Dissection Overview 77
- Dissection Instructions 77
- ANTERIOR THORACIC WALL 77
 - PLEURAL CAVITIES 78

Dissection Follow-up 79

LUNGS 80

- Dissection Overview 80
- Dissection Instructions 80
- LUNGS IN THE THORAX 80
 - REMOVAL OF THE LUNGS 80

Dissection Follow-up 83

MEDIASTINUM 83

- Dissection Overview 83
- Dissection Instructions 83
- MEDIASTINUM 83
 - HEART IN THE THORAX 84
 - REMOVAL OF THE HEART 86

Dissection Follow-up 86

EXTERNAL FEATURES OF THE HEART 86

- Dissection Overview 86
- Dissection Instructions 87
- SURFACE FEATURES 87
 - CARDIAC VEINS 87
 - CORONARY ARTERIES 88

Dissection Follow-up 89

INTERNAL FEATURES OF THE HEART 89

- Dissection Overview 89
- Dissection Instructions 89
- RIGHT ATRIUM 89
 - RIGHT VENTRICLE 90
 - LEFT ATRIUM 92
 - LEFT VENTRICLE 92

Dissection Follow-up 93

SUPERIOR MEDIASTINUM 93

- Dissection Overview 93
- Dissection Instructions 93
- SUPERIOR MEDIASTINUM 93

Dissection Follow-up 95

POSTERIOR MEDIASTINUM 95

- Dissection Overview 95
- Dissection Instructions 96
- POSTERIOR MEDIASTINUM 96

Dissection Follow-up 98

CHAPTER 4

The Abdomen 99

SUPERFICIAL FASCIA OF THE ANTEROLATERAL ABDOMINAL WALL 99

- Dissection Overview 99
- SURFACE ANATOMY 99

Dissection Instructions 101

- SKIN INCISIONS 101
- SUPERFICIAL FASCIA 101

Dissection Follow-up 102

MUSCLES OF THE ANTEROLATERAL ABDOMINAL WALL 102

- Dissection Overview 102
- SKELETON OF THE ABDOMINAL WALL 102

Dissection Instructions 103

- EXTERNAL OBLIQUE MUSCLE 103
- INTERNAL OBLIQUE MUSCLE 104
- TRANSVERSUS ABDOMINIS MUSCLE 105
- RECTUS ABDOMINIS MUSCLE 106
- DEEP INGUINAL RING 108

Dissection Follow-up 109

REFLECTION OF THE ABDOMINAL WALL 110

- Dissection Overview 110
- Dissection Instructions 110
- FOUR ABDOMINAL QUADRANTS 110
 - ABDOMINAL WALL REFLECTION 111

Dissection Follow-up 113

PERITONEUM AND PERITONEAL CAVITY 113

- Dissection Overview 113
- Dissection Instructions 113
 - ABDOMINAL VISCERA 113
 - REFLECTION OF THE DIAPHRAGM 114
 - PERITONEUM 115
- Dissection Follow-up 117

CELIAC TRUNK, STOMACH, SPLEEN, LIVER, AND GALLBLADDER 117

- Dissection Overview 117
- Dissection Instructions 117
 - PORTAL TRIAD 118
 - CELIAC TRUNK 118
 - SPLEEN 120
 - LIVER 120
 - GALLBLADDER 121
- Dissection Follow-up 122

SUPERIOR MESENTERIC ARTERY AND SMALL INTESTINE 122

- Dissection Overview 122
- Dissection Instructions 123
 - SUPERIOR MESENTERIC ARTERY AND SMALL INTESTINE 123
 - SMALL INTESTINE 124
- Dissection Follow-up 125

INFERIOR MESENTERIC ARTERY AND LARGE INTESTINE 125

- Dissection Overview 125
- Dissection Instructions 125
 - INFERIOR MESENTERIC ARTERY 125
 - LARGE INTESTINE 126
- Dissection Follow-up 127

DUODENUM, PANCREAS, AND HEPATIC PORTAL VEIN 127

- Dissection Overview 127
- Dissection Instructions 127
 - DUODENUM 127
 - PANCREAS 127
 - HEPATIC PORTAL VEIN 128
- Dissection Follow-up 129

REMOVAL OF THE GASTROINTESTINAL TRACT 129

- Dissection Overview 129
- Dissection Instructions 129
 - OPENING THE STOMACH 129
 - OPENING THE SMALL INTESTINE AND LARGE INTESTINE 129
 - REMOVAL OF THE GASTROINTESTINAL TRACT 130
- Dissection Follow-up 131

POSTERIOR ABDOMINAL VISCERA 131

- Dissection Overview 131
- Dissection Instructions 132
 - KIDNEYS 133
 - SUPRARENAL GLANDS 135
 - ABDOMINAL AORTA AND INFERIOR VENA CAVA 136
- Dissection Follow-up 136

POSTERIOR ABDOMINAL WALL 136

- Dissection Overview 136
- Dissection Instructions 137
 - LUMBAR PLEXUS 137
 - ABDOMINAL PART OF THE SYMPATHETIC TRUNK 138
- Dissection Follow-up 138

DIAPHRAGM 139

- Dissection Overview 139
- Dissection Instructions 139
- Dissection Follow-up 140

CHAPTER 5**The Pelvis and Perineum 141****ANAL TRIANGLE 141**

- Dissection Overview 141
 - SKELETON OF THE PELVIS 142
- Dissection Instructions 144
 - SKIN AND SUPERFICIAL FASCIA REMOVAL 144
 - ISCHIOANAL FOSSA 144
- Dissection Follow-up 145

MALE EXTERNAL GENITALIA AND PERINEUM 146

- Dissection Overview 146
- Dissection Instructions 146
 - SCROTUM 146
 - SPERMATIC CORD 147
 - TESTIS 147
- Dissection Follow-up 148

MALE UROGENITAL TRIANGLE 148

- Dissection Overview 148
- Dissection Instructions 148
 - SKIN REMOVAL 148
 - MALE SUPERFICIAL PERINEAL POUCH 149
 - PENIS 151
 - SPONGY (PENILE) URETHRA 152
 - MALE DEEP PERINEAL POUCH 153
- Dissection Follow-up 153

MALE PELVIC CAVITY 154

- Dissection Overview 154
- Dissection Instructions 154
 - MALE PERITONEUM 154
 - SECTION OF THE MALE PELVIS 155
 - MALE INTERNAL GENITALIA 155
- Dissection Follow-up 157

MALE URINARY BLADDER, RECTUM, AND ANAL CANAL 158

- Dissection Overview 158
- Dissection Instructions 158
 - MALE URINARY BLADDER 158
 - MALE RECTUM AND ANAL CANAL 159
- Dissection Follow-up 160

MALE INTERNAL ILIAC ARTERY AND SACRAL PLEXUS 160

- Dissection Overview 160
- Dissection Instructions 160
 - BLOOD VESSELS 160
 - NERVES 161
- Dissection Follow-up 163

MALE PELVIC DIAPHRAGM 163

- Dissection Overview 163
- Dissection Instructions 163
- Dissection Follow-up 165

FEMALE EXTERNAL GENITALIA, UROGENITAL TRIANGLE, AND PERINEUM 165

Dissection Overview 165

Dissection Instructions 165

- LABIUM MAJUS 165
- FEMALE EXTERNAL GENITALIA 166
- SKIN REMOVAL 166
- FEMALE SUPERFICIAL PERINEAL POUCH AND CLITORIS 167
- FEMALE DEEP PERINEAL POUCH 169

Dissection Follow-up 170

FEMALE PELVIC CAVITY 171

Dissection Overview 171

Dissection Instructions 171

- FEMALE PERITONEUM 171
- BROAD LIGAMENT 171
- SECTION OF THE FEMALE PELVIS 172
- FEMALE INTERNAL GENITALIA 173

Dissection Follow-up 175

FEMALE URINARY BLADDER, RECTUM, AND ANAL CANAL 175

Dissection Overview 175

Dissection Instructions 175

- FEMALE URINARY BLADDER 175
- FEMALE RECTUM AND ANAL CANAL 176

Dissection Follow-up 177

FEMALE INTERNAL ILIAC ARTERY AND SACRAL PLEXUS 178

Dissection Overview 178

Dissection Instructions 178

- BLOOD VESSELS 178
- NERVES 179

Dissection Follow-up 180

FEMALE PELVIC DIAPHRAGM 180

Dissection Overview 180

Dissection Instructions 182

Dissection Follow-up 182

CHAPTER 6**The Lower Limb 183****SUPERFICIAL VEINS AND CUTANEOUS NERVES 183**

Dissection Overview 183

- SURFACE ANATOMY 183
- SKELETON OF THE ANTERIOR THIGH 184

Dissection Instructions 184

- SKIN INCISIONS 184
- SUPERFICIAL FASCIA OF THE POSTERIOR LOWER LIMB 185
- SUPERFICIAL FASCIA OF THE ANTERIOR LOWER LIMB 187

Dissection Follow-up 188

ANTERIOR COMPARTMENT OF THE THIGH 188

Dissection Overview 188

Dissection Instructions 189

- SAPHENOUS OPENING 189
- FEMORAL TRIANGLE 189
- ADDUCTOR CANAL AND SARTORIUS MUSCLE 191
- QUADRICEPS FEMORIS MUSCLE 192
- TENSOR OF FASCIA LATA MUSCLE 193

Dissection Follow-up 193

MEDIAL COMPARTMENT OF THE THIGH 194

Dissection Overview 194

Dissection Instructions 194

Dissection Follow-up 196

GLUTEAL REGION 197

Dissection Overview 197

- SKELETON OF THE GLUTEAL REGION 197

Dissection Instructions 198

- GLUTEUS MAXIMUS MUSCLE 198
- GLUTEUS MEDIUS AND MINIMUS MUSCLES 199
- EXTERNAL ROTATORS OF THE HIP 200

Dissection Follow-up 200

POSTERIOR COMPARTMENT OF THE THIGH AND POPLITEAL FOSSA 201

Dissection Overview 201

- SKELETON OF THE POSTERIOR THIGH 201

Dissection Instructions 202

- POSTERIOR THIGH 202
- POPLITEAL FOSSA 202

Dissection Follow-up 204

POSTERIOR COMPARTMENT OF THE LEG 205

Dissection Overview 205

- SKELETON OF THE LEG 206
- SKELETON OF THE FOOT 206

Dissection Instructions 207

- SUPERFICIAL COMPARTMENT OF POSTERIOR LEG 207
- DEEP COMPARTMENT OF POSTERIOR LEG 208

Dissection Follow-up 210

LATERAL COMPARTMENT OF THE LEG 211

Dissection Overview 211

Dissection Instructions 211

Dissection Follow-up 212

ANTERIOR COMPARTMENT OF THE LEG AND DORSUM OF THE FOOT 213

Dissection Overview 213

Dissection Instructions 213

- ANTERIOR LEG MUSCLES 213
- DORSUM OF THE FOOT 215

Dissection Follow-up 215

SOLE OF THE FOOT 216

Dissection Overview 216

Dissection Instructions 216

- PLANTAR APONEUROSIS AND CUTANEOUS NERVES 216
- FIRST LAYER OF THE SOLE 217
- SECOND LAYER OF THE SOLE 218
- THIRD LAYER OF THE SOLE 218
- FOURTH LAYER OF THE SOLE 219

Dissection Follow-up 221

JOINTS OF THE LOWER LIMB 222

Dissection Overview 222

Dissection Instructions 222

- HIP JOINT 222
- KNEE JOINT POSTERIOR APPROACH 223
- KNEE JOINT ANTERIOR APPROACH 225
- ANKLE JOINT 225
- JOINTS OF INVERSION AND EVERSION 226

Dissection Follow-up 227

CHAPTER 7**The Head And Neck 229****SUPERFICIAL NECK 229**

Dissection Overview 229

- SKELETON OF THE NECK 229
- ORGANIZATION OF THE NECK 230

Dissection Instructions 231

- SKIN REMOVAL 231
- POSTERIOR TRIANGLE OF THE NECK 231

Dissection Follow-up 233

ANTERIOR TRIANGLE OF THE NECK 234

Dissection Overview 234

- BONES AND CARTILAGES OF THE NECK 234

Dissection Instructions 235

- SUPERFICIAL FASCIA 235
- MUSCULAR TRIANGLE 235
- SUBMANDIBULAR TRIANGLE 235
- SUBMENTAL TRIANGLE 236
- CAROTID TRIANGLE 236

Dissection Follow-up 239

THYROID AND PARATHYROID GLANDS 240

Dissection Overview 240

Dissection Instructions 240

Dissection Follow-up 241

ROOT OF THE NECK 241

Dissection Overview 241

Dissection Instructions 241

Dissection Follow-up 243

HEAD 244**FACE 244**

Dissection Overview 244

- SURFACE ANATOMY 244
- SKULL 245

Dissection Instructions 248

- SKIN INCISIONS 248
- SUPERFICIAL FASCIA AND FACIAL NERVE 248
- FACIAL ARTERY AND VEIN 250
- MUSCLES AROUND THE ORBITAL OPENING 250
- MUSCLES AROUND THE ORAL OPENING 250
- SENSORY NERVES OF THE FACE 251

Dissection Follow-up 251

PAROTID REGION 252

Dissection Overview 252

- SKELETON OF THE PAROTID REGION 252

Dissection Instructions 253

Dissection Follow-up 254

SCALP 254

Dissection Overview 254

Dissection Instructions 255

Dissection Follow-up 256

TEMPORAL REGION 256

Dissection Overview 256

- SKELETON OF THE TEMPORAL REGION 256

Dissection Instructions 258

- MASSETER MUSCLE AND REMOVAL OF THE ZYGOMATIC ARCH 258
- TEMPORAL REGION 258
- INFRATEMPORAL FOSSA 259
- MAXILLARY ARTERY 259
- PTERYGOID MUSCLES 260
- TEMPOROMANDIBULAR JOINT 261

Dissection Follow-up 262

INTERIOR OF THE SKULL 263

Dissection Overview 263

Dissection Instructions 263

- REMOVAL OF THE CALVARIA 263
- CRANIAL MENINGES 264

Dissection Follow-up 265

REMOVAL OF THE BRAIN 266

Dissection Overview 266

- CRANIAL FOSSAE 266

Dissection Instructions 267

Dissection Follow-up 267

DURAL INFOLDINGS AND DURAL VENOUS SINUSES 267

Dissection Overview 267

Dissection Instructions 267

- DURAL INFOLDINGS 267
- DURAL VENOUS SINUSES 268

Dissection Follow-up 269

GROSS ANATOMY OF THE BRAIN 269

Dissection Overview 269

Dissection Instructions 269

- BRAIN 269
- BLOOD SUPPLY TO THE BRAIN 269
- CRANIAL NERVES 270

Dissection Follow-up 271

CRANIAL FOSSAE 271

Dissection Overview 271

- SKELETON OF THE CRANIAL BASE 271

Dissection Instructions 273

- ANTERIOR CRANIAL FOSSA 273
- MIDDLE CRANIAL FOSSA 274
- POSTERIOR CRANIAL FOSSA 275

Dissection Follow-up 275

ORBIT 276

Dissection Overview 276

- SKELETON OF THE ORBIT 276
- SURFACE ANATOMY OF THE EYEBALL 277

Dissection Instructions 278

- EYELID AND LACRIMAL APPARATUS 278
- RIGHT ORBIT FROM THE SUPERIOR APPROACH 279
- CONTENTS OF THE ORBIT 280
- LEFT ORBIT FROM THE ANTERIOR APPROACH 281

Dissection Follow-up 283

DISARTICULATION OF THE HEAD 283

Dissection Overview 283

- SKELETON OF THE SUBOCCIPITAL REGION 283

Dissection Instructions 284

- RETROPHARYNGEAL SPACE 284
- DISARTICULATION OF THE HEAD 285
- PREVERTEBRAL AND LATERAL VERTEBRAL REGIONS 285

Dissection Follow-up 286

PHARYNX 286

Dissection Overview 286

Dissection Instructions 286

- MUSCLES OF THE PHARYNGEAL WALL 286
- NERVES OF THE PHARYNX 287
- OPENING THE PHARYNX 288
- BISECTION OF THE HEAD 288
- INTERNAL ASPECT OF THE PHARYNX 289

Dissection Follow-up 290

NOSE AND NASAL CAVITY 290

Dissection Overview 290

- SKELETON OF THE NASAL CAVITY 291

Dissection Instructions 292

- EXTERNAL NOSE 292
- NASAL SEPTUM 292
- LATERAL WALL OF THE NASAL CAVITY 293

Dissection Follow-up 294

HARD PALATE AND SOFT PALATE 294

Dissection Overview 294

- SKELETON OF THE PALATE 295

Dissection Instructions 296

- SOFT PALATE 296
- TONSILLAR BED 298
- SPHENOPALATINE FORAMEN AND PTERYGOPALATINE FOSSA 298

Dissection Follow-up 299

ORAL REGION 300

Dissection Overview 300

- SURFACE ANATOMY OF THE ORAL VESTIBULE 300
- SURFACE ANATOMY OF THE ORAL CAVITY PROPER 300

Dissection Instructions 301

- TONGUE 301
- BISECTION OF THE TONGUE AND MANDIBLE 301
- SUBLINGUAL REGION 301

Dissection Follow-up 303

LARYNX 303

Dissection Overview 303

- SKELETON OF THE LARYNX 304

Dissection Instructions 305

- INTRINSIC MUSCLES OF THE LARYNX 305
- INTERIOR OF THE LARYNX 306

Dissection Follow-up 307

EAR 307

Dissection Overview 307

- SURFACE ANATOMY OF THE EXTERNAL EAR 308
- SKELETON OF THE EAR 308

Dissection Instructions 309

- MIDDLE EAR (TYMPANIC CAVITY) 309
- WALLS OF THE TYMPANIC CAVITY 311
- INTERNAL EAR 312

Dissection Follow-up 312

Index 313