

FRANK H. NETTER, MD



ATLAS OF  
HUMAN  
ANATOMY

5

EDITION



00033384

ห้องสมุด วพบ.สุรินทร์

Enhanced International Edition

Not for sale in  
Australia, Canada,  
Europe, Japan,  
or USA

SAUNDERS  
ELSEVIER

[www.studentconsult.com](http://www.studentconsult.com)

## Contents

### Section 1 **HEAD AND NECK**

Topographic Anatomy	1
Superficial Head and Neck	2-3
Bones and Ligaments	4-23
Superficial Face	24-25
Neck	26-34
Nasal Region	35-50
Oral Region	51-62
Pharynx	63-73
Thyroid Gland and Larynx	74-80
Orbit and Contents	81-91
Ear	92-98
Meninges and Brain	99-114
Cranial and Cervical Nerves	115-134
Cerebral Vasculature	135-146
Regional Scans	147-148

### Section 2 **BACK AND SPINAL CORD**

Topographic Anatomy	149
Bones and Ligaments	150-156
Spinal Cord	157-167
Muscles and Nerves	168-172
Cross-sectional Anatomy	173-174

### Section 3 **THORAX**

Topographic Anatomy	175
Mammary Gland	176-178
Body Wall	179-189
Lungs	190-204
Heart	205-223
Mediastinum	224-234
Regional Scans	235
Cross-sectional Anatomy	236-239

### Section 4 **ABDOMEN**

Topographic Anatomy	240
Body Wall	241-260
Peritoneal Cavity	261-266
Viscera (Gut)	267-276
Viscera (Accessory Organs)	277-282
Visceral Vasculature	283-296
Innervation	297-307
Kidneys and Suprarenal Glands	308-322
Cross-sectional Anatomy	323-330

## Section 5

## PELVIS AND PERINEUM

Topographic Anatomy	331
Bones and Ligaments	332-336
Pelvic Floor and Contents	337-347
Urinary Bladder	348-351
Uterus, Vagina, and Supporting Structures	352-355
Perineum and External Genitalia: Female	356-359
Perineum and External Genitalia: Male	360-367
Homologues of Genitalia	368-369
Testis, Epididymis, and Ductus Deferens	370
Rectum	371-376
Regional Scans	377
Vasculature	378-388
Innervation	389-397
Cross-sectional Anatomy	398-399

## Section 6

## UPPER LIMB

Topographic Anatomy	400
Cutaneous Anatomy	401-405
Shoulder and Axilla	406-418
Arm	419-423
Elbow and Forearm	424-439
Wrist and Hand	440-459
Neurovasculature	460-467
Regional Scans	468

## Section 7

## LOWER LIMB

Topographic Anatomy	469
Cutaneous Anatomy	470-473
Hip and Thigh	474-493
Knee	494-500
Leg	501-510
Ankle and Foot	511-525
Neurovasculature	526-530
Regional Scans	531

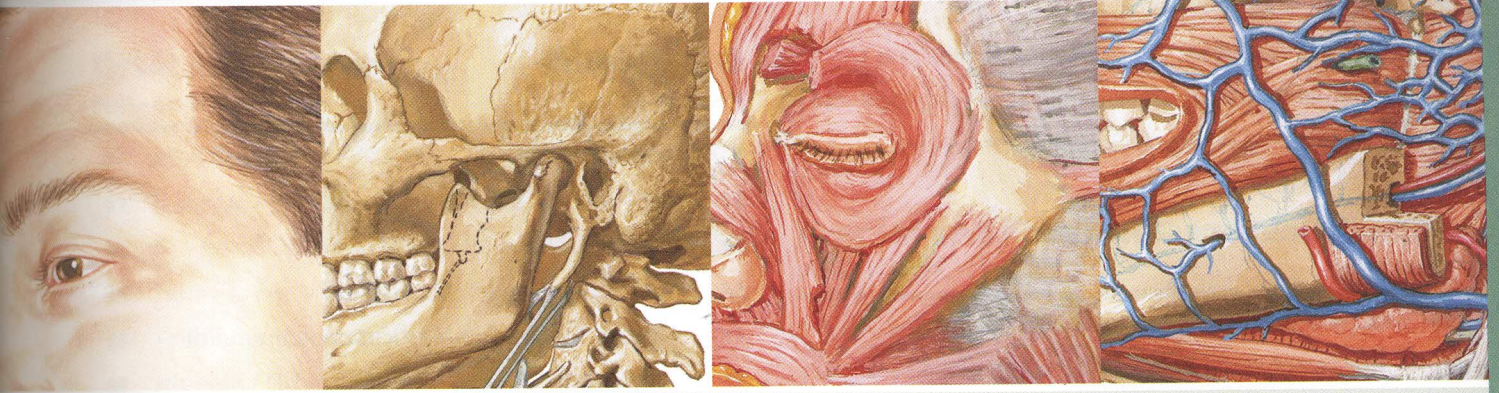
## Section 8

## CROSS-SECTIONAL ANATOMY

Key Figures for Cross Sections	532
--------------------------------	-----

**References**

**Index**



## Section 1 HEAD AND NECK

### Topographic Anatomy

#### Plate 1

- 1 Head and Neck

### Superficial Head and Neck

#### Plates 2-3

- 2 Cutaneous Nerves of Head and Neck
- 3 Superficial Arteries and Veins of Face and Scalp

### Bones and Ligaments

#### Plates 4-23

- 4 Skull: Anterior View
- 5 Skull: Anteroposterior Radiograph
- 6 Skull: Lateral View
- 7 Skull: Lateral Radiograph
- 8 Skull: Midsagittal Section
- 9 Calvaria
- 10 Cranial Base: Inferior View
- 11 Cranial Base: Superior View
- 12 Foramina and Canals of Cranial Base: Inferior View
- 13 Foramina and Canals of Cranial Base: Superior View
- 14 Skull of Newborn
- 15 Bony Framework of Head and Neck
- 16 Pterygoid Fossae: Posterior View
- 17 Mandible
- 18 Temporomandibular Joint
- 19 Cervical Vertebrae: Atlas and Axis
- 20 Cervical Vertebrae (continued)

# HEAD AND NECK

- 21 Cervical Vertebrae: Uncovertebral Joints
- 22 External Craniocervical Ligaments
- 23 Internal Craniocervical Ligaments

## Superficial Face

Plates 24-25

- 24 Facial Nerve Branches and Parotid Gland
- 25 Muscles of Facial Expression: Lateral View

## Neck

Plates 26-34

- 26 Muscles of Neck: Lateral View
- 27 Muscles of Neck: Anterior View
- 28 Infrahyoid and Suprahyoid Muscles
- 29 Scalene and Prevertebral Muscles
- 30 Superficial Veins and Cutaneous Nerves of Neck
- 31 Nerves and Vessels of Neck
- 32 Nerves and Vessels of Neck (continued)
- 33 Carotid Arteries
- 34 Fascial Layers of Neck

## Nasal Region

Plates 35-50

- 35 Nose
- 36 Lateral Wall of Nasal Cavity
- 37 Lateral Wall of Nasal Cavity (continued)
- 38 Medial Wall of Nasal Cavity (Nasal Septum)
- 39 Maxillary Artery
- 40 Arteries of Nasal Cavity: Nasal Septum Turned Up
- 41 Nerves of Nasal Cavity: Nasal Septum Turned Up
- 42 Nerves of Nasal Cavity (continued)
- 43 Autonomic Innervation of Nasal Cavity
- 44 Ophthalmic (V<sub>1</sub>) and Maxillary (V<sub>2</sub>) Nerves
- 45 Mandibular Nerve (V<sub>3</sub>)
- 46 Orientation of Nerves and Vessels of the Cranial Base
- 47 Nose and Maxillary Sinus: Transverse Section
- 48 Paranasal Sinuses
- 49 Paranasal Sinuses (continued)
- 50 Paranasal Sinuses: Changes with Age

## Oral Region

Plates 51-62

- 51 Inspection of Oral Cavity
- 52 Roof of Oral Cavity
- 53 Floor of Oral Cavity
- 54 Muscles Involved in Mastication
- 55 Muscles Involved in Mastication (continued)
- 56 Teeth
- 57 Teeth (continued)
- 58 Tongue
- 59 Tongue (continued)
- 60 Tongue and Salivary Glands: Sections
- 61 Salivary Glands
- 62 Afferent Innervation of Oral Cavity and Pharynx

## Pharynx

Plates 63-73

- 63 Pharynx: Median Section
- 64 Fauces
- 65 Muscles of Pharynx: Sagittal Section
- 66 Pharynx: Opened Posterior View
- 67 Muscles of Pharynx: Partially Opened Posterior View
- 68 Muscles of Pharynx: Lateral View
- 69 Arteries of Oral and Pharyngeal Regions
- 70 Veins of Oral and Pharyngeal Regions
- 71 Nerves of Oral and Pharyngeal Regions
- 72 Lymph Vessels and Nodes of Head and Neck
- 73 Lymph Vessels and Nodes of Pharynx and Tongue

## Thyroid Gland and Larynx

Plates 74-80

- 74 Thyroid Gland: Anterior View
- 75 Thyroid Gland and Pharynx: Posterior View
- 76 Parathyroid Glands
- 77 Cartilages of Larynx
- 78 Intrinsic Muscles of Larynx
- 79 Action of Intrinsic Muscles of Larynx
- 80 Nerves of Larynx

## Orbit and Contents

Plates 81-91

- 81 Eyelids
- 82 Lacrimal Apparatus
- 83 Fasciae of Orbit and Eyeball
- 84 Extrinsic Eye Muscles
- 85 Arteries and Veins of Orbit and Eyelids
- 86 Nerves of Orbit
- 87 Eyeball
- 88 Anterior and Posterior Chambers of Eye
- 89 Lens and Supporting Structures
- 90 Intrinsic Arteries and Veins of Eye
- 91 Vascular Supply of Eye

## Ear

Plates 92-98

- 92 Pathway of Sound Reception
- 93 External Ear and Tympanic Cavity
- 94 Tympanic Cavity
- 95 Bony and Membranous Labyrinths
- 96 Bony and Membranous Labyrinths (continued)
- 97 Orientation of Labyrinths in Skull
- 98 Auditory (Pharyngotympanic, Eustachian) Tube

## Meninges and Brain

Plates 99-114

- 99 Meninges and Diploic Veins
- 100 Meningeal Arteries
- 101 Meninges and Superficial Cerebral Veins
- 102 Dural Venous Sinuses
- 103 Dural Venous Sinuses (continued)
- 104 Cerebrum: Lateral Views
- 105 Cerebrum: Medial Views
- 106 Cerebrum: Inferior View
- 107 Ventricles of Brain
- 108 Circulation of Cerebrospinal Fluid
- 109 Basal Nuclei (Ganglia)
- 110 Thalamus
- 111 Hippocampus and Fornix

- 112 Cerebellum
- 113 Brainstem
- 114 Fourth Ventricle and Cerebellum

## Cranial and Cervical Nerves

Plates 115-134

- 115 Cranial Nerve Nuclei in Brainstem: Schema
- 116 Cranial Nerve Nuclei in Brainstem: Schema (continued)
- 117 Cranial Nerves (Motor and Sensory Distribution): Schema
- 118 Olfactory Nerve (I): Schema
- 119 Optic Nerve (II) (Visual Pathway): Schema
- 120 Oculomotor (III), Trochlear (IV), and Abducent (VI) Nerves: Schema
- 121 Trigeminal Nerve (V): Schema
- 122 Facial Nerve (VII): Schema
- 123 Vestibulocochlear Nerve (VIII): Schema
- 124 Glossopharyngeal Nerve (IX): Schema
- 125 Vagus Nerve (X): Schema
- 126 Accessory Nerve (XI): Schema
- 127 Hypoglossal Nerve (XII): Schema
- 128 Cervical Plexus: Schema
- 129 Autonomic Nerves in Neck
- 130 Autonomic Nerves in Head
- 131 Ciliary Ganglion: Schema
- 132 Pterygopalatine and Submandibular Ganglia: Schema
- 133 Otic Ganglion: Schema
- 134 Taste Pathways: Schema

## Cerebral Vasculature

Plates 135-146

- 135 Arteries to Brain and Meninges
- 136 Arteries to Brain: Schema
- 137 Arteries of Brain: Inferior Views
- 138 Cerebral Arterial Circle (of Willis)
- 139 Arteries of Brain: Frontal View and Section
- 140 Arteries of Brain: Lateral and Medial Views
- 141 Arteries of Posterior Cranial Fossa

# HEAD AND NECK

- 142 Veins of Posterior Cranial Fossa
- 143 Deep Veins of Brain
- 144 Subependymal Veins of Brain
- 145 Hypothalamus and Hypophysis
- 146 Arteries and Veins of Hypothalamus and Hypophysis

## Regional Scans

Plates 147-148

- 147 Cranial Imaging (MRV and MRA)
- 148 Cranial Imaging (MRI)