

Journal of
Obstetric,
Gynecologic &
Neonatal Nursing

40
1972-2011

September / October 2011
Volume 40 • Number 5

JOGGNN

วารสารใหม่ประจำเดือน

มีนาคม.....2555.....

*Scholarship for the Care of Women,
Childbearing Families & Newborns*

EDITORIAL

The Nurses' Health Study
and the National Children's Study

THEN & NOW

Dr. Ruth Lubic, a Timeliness and Tireless
Visionary for Childbearing Families

PRINCIPLES & PRACTICE

A Performance Improvement Process
to Tackle Tachysystole

The SUCCESS Program for Smoking
Cessation for Pregnant Women

RESEARCH

A Longitudinal Survey of Childbirth-
Related Fear and Associated Factors

Using Geographical Information
Systems to Explore Disparities in
Preterm Birth Rates Among Foreign-
born and U.S.-born Black Mothers

Parents' Perceptions of Their Infants'
Participation in Randomized Controlled
Trials

Depressive Symptoms Before and After
Elective Hysterectomy

Health-Related Quality of Life Among
Adolescents with Polycystic Ovary
Syndrome

Do Perinatal Nurses Still Check for
Blood Return When Administering the
Hepatitis B Vaccine?

SPECIAL REPORT

Current Resources for Evidence-Based
Practice, September/October, 2011

IN FOCUS EDITORIAL

Application of Ultrasound Imaging
to Nursing Practice

IN FOCUS

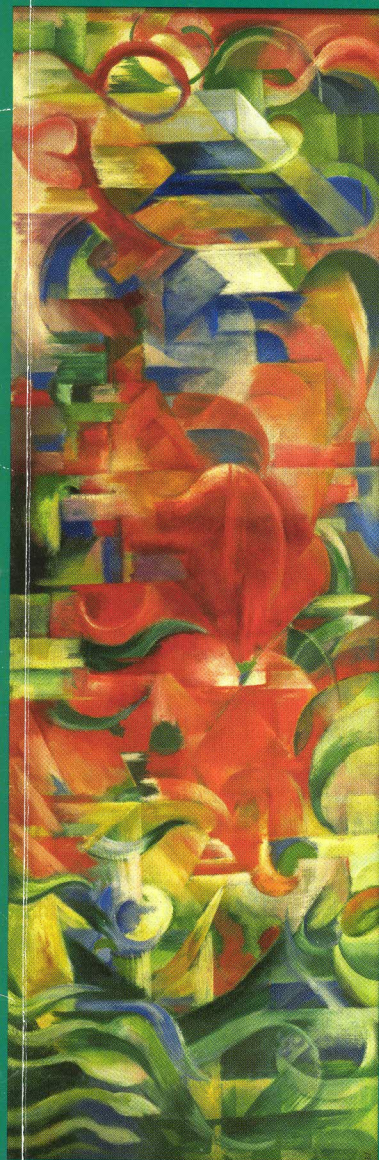
Fetal Growth Scans and Amniotic Fluid
Assessments in Pregestational and
Gestational Diabetes

Sonographic Assessment of Cervical
Length and the Risk of Preterm Birth

The Role of Ultrasound Imaging
in Detecting Endometrial Cancer
in Postmenopausal Women
with Vaginal Bleeding

Ultrasound for Nurses in Reproductive
Medicine

Learner Portfolios and Hands-On
Workshop to Facilitate and Evaluate
Nurses' Learning in Obstetric Ultrasound



6910 bath

EDITORIAL

507 The Nurses' Health Study and the National Children's Study

These two national longitudinal studies present opportunities to more fully understand health and its antecedents across the lifespan.

Nancy K. Lowe

THEN & NOW

509 Dr. Ruth Lubic, a Timeliness and Tireless Visionary for Childbearing Families

The career of Dr. Ruth Lubic is an inspirational testimony of the power of one nurse-midwife to significantly affect health care for childbearing families.

Jacqueline Rychnovsky

PRINCIPLES & PRACTICE

512 A Performance Improvement Process to Tackle Tachysystole

The authors present a nurse-led, interdisciplinary quality improvement project to implement and sustain an evidence-based clinical algorithm for safe oxytocin administration.

Jennifer Doyle, Tiffany H. Kenny, Amy M. Burkett, and Vivian E. von Gruenigen

520 The SUCCESS Program for Smoking Cessation for Pregnant Women

The authors discuss the process and results of the AWHONN sponsored evidence-based practice program "Setting Universal Cessation Counseling Education and Screening Standards."

Susan Albrecht, Karen Kelly-Thomas, Jason W. Osborne, and Semhar Ogbagaber

RESEARCH

532 A Longitudinal Survey of Childbirth-Related Fear and Associated Factors

A better birth experience, related to being in control and satisfaction with information provided during labor, was linked to significantly reduced fear from pregnancy to postpartum.

Ingegerd Hildingsson, Christina Nilsson, Annika Karlström, and Ingela Lundgren

544 Using Geographical Information Systems to Explore Disparities in Preterm Birth Rates Among Foreign-born and U.S.-born Black Mothers

An innovative method of geographic-spatial patterning of Philadelphia demonstrated patterns of "bad" neighborhoods significantly linked to higher prevalence of preterm birth for Black mothers.

Joan Rosen Bloch

555 Parents' Perceptions of Their Infants' Participation in Randomized Controlled Trials

These qualitative data suggest that clinicians should be encouraged to approach parents about enrollment of their high-risk infants in clinical trials regardless of the infant's prognosis.

Kim Cartwright, Liam Mahoney, Susan Ayers, and Heike Rabe

566 Depressive Symptoms Before and After Elective Hysterectomy

Approximately 15% of women who experienced elective hysterectomy reported depressive symptoms both before and after surgery.

Amanda Digel Vandyk, Ingrid Brenner, Joan Tranmer, and Elizabeth Van Den Kerkhof

577 Health-Related Quality of Life Among Adolescents with Polycystic Ovary Syndrome

These qualitative results document an overall negative effect of polycystic ovary syndrome on health-related quality of life.

Georgina L. Jones, Jennie M. Hall, Hany L. Lashen, Adam H. Balen, and William L. Ledger

Continued

On Our Cover:

Franz Marc. Playing Forms - Spielende Formen, 1914. Location: Folkwang Museum, Essen, Germany.

Photo Credit: Erich Lessing/Art Resource, NY

589 Do Perinatal Nurses Still Check for Blood Return When Administering the Hepatitis B Vaccine?

Ninety percent of the survey respondents aspirate with the Hepatitis B vaccine while only 13% know that this practice is no longer recommended.

Desiree Hensel and Jill Springmyer

SPECIAL REPORT

595 Current Resources for Evidence-Based Practice, September/October, 2011

A review of new resources to support the provision of evidence-based care for women and infants.

Cathy L. Emeis

IN FOCUS

Application of Ultrasound Imaging to Nursing Practice

Guest Editor: Cydney Afriat Menihan

601 Application of Ultrasound Imaging to Nursing Practice

The guest editor introduces this In Focus series, which highlights several ways nurses can incorporate ultrasound into clinical practice.

Cydney Afriat Menihan

603 Fetal Growth Scans and Amniotic Fluid Assessments in Pregestational and Gestational Diabetes

CNE Fetal growth scans and amniotic fluid assessments used by nurses to evaluate fetal well-being in women with pregestational and gestational diabetes are explained.

Irma Yehuda, Jamille Nagtalon-Ramos, and Kimberly Trout

617 Sonographic Assessment of Cervical Length and the Risk of Preterm Birth

The author explains the use of sonographic assessment of cervical length for evaluating the risk of preterm birth.

Betty Kay Taylor

632 The Role of Ultrasound Imaging in Detecting Endometrial Cancer in Postmenopausal Women with Vaginal Bleeding

The performance of transvaginal ultrasonography by nurses to identify women at risk for endometrial cancer is described.

Wendy Grube, Theresa Ammon, and Mara Devin Killen

638 Ultrasound for Nurses in Reproductive Medicine

Detailed descriptions and accompanying images are especially important for nurses caring for women using assisted reproductive technologies.

Susan C. Carr

654 Learner Portfolios and Hands-On Workshop to Facilitate and Evaluate Nurses' Learning in Obstetric Ultrasound

The authors explore one institution's approach to expand nurses' ultrasonic skill assessment using learner portfolios and a hands-on workshop.

Anthony Lathrop and Mary Blackburn

A WHONN POSITION STATEMENTS

662 Women's Cardiovascular Health

665 Nursing Support of Laboring Women
